



AOTEAROA CULTURAL &
VOLUNTEER EXCHANGE

NEW ZEALAND WORK PROFILE 2026 - 2027



KIA ORA!

Warm greetings from New Zealand, Aotearoa!

This **Work Profile** offers a general view about the hosting placements available within the ACVE New Zealand program.

We ask you to please carefully read all of the information about our program and hosting placements. The more you learn about our program, the easier your integration and the more rewarding your experience in New Zealand will be.

You will find descriptions on each of the projects that are usually available on our program. Projects are always evolving and changing, so it's important to keep an open mind. It is best to indicate the *type* of project you're after, and then we can fit you into the best placement relative to your skills and interests.

The **Project Preference List** (PPL) is a separate document that you will need to complete after considering our projects. This shows us your interests and suitability to different areas. Please note that ACVE works with our projects to try and match you with the best fit – your PPL is not a guarantee of a certain project, but it does help us a lot!

We ask that you read through the information thoroughly and be completely honest when filling out your **ICYE Candidate Application Form**. You should also make sure to read the New Zealand **National Profile**, as this includes important information you need to know about New Zealand and our program.

Remember that voluntary work can at times be difficult. You should come prepared to work hard and be ready for a mix of emotions. The end result is that you will have a once-in-a-lifetime experience – but don't always expect the journey to be easy! Our volunteers work hard, however the rewards stay with you for a lifetime.

Thank you for your cooperation and we look forward to seeing you in New Zealand very soon!

Best wishes

THE ACVE TEAM!



IMPORTANT NOTES:

Our projects are in beautiful locations in New Zealand
...BUT...

most are in rural areas that are quite isolated.

Get ready for being comfortable with living out of town
and being proactive to make things happen!

There is very little public transport in New Zealand.
Most people travel by car for day-to-day activities.
Due to this, and the rural locations of a lot of projects,
**we strongly recommend that you have your Driver's
Licence and consider buying a car in NZ.**

Please check out the National Profile for more
information about driving and vehicles in NZ.

**Most of our accommodation is flatting situations on-site
at your project.**

This will include living with other volunteers and
sometimes with staff. If you have never lived away from
home before or shared a house with others, please
practice cleaning your own toilet, shower and
dishes...and start perfecting your cooking skills 😊



PROJECTS WITH ACVE!

Below is a list of our projects available in New Zealand. On the following pages you will find a little bit of information on each one.

EDUCATION

Amuri Area School 6

Hōhepa School 7

CHILD & YOUTH CARE

Cholmondeley Children's Centre 9

ADVENTURE CAMP

Finlay Park 11

Living Springs 12

Lakes Ranch 13

El Rancho 14

Camp Raglan 15

Woodend Camp 16

Mi Camp 17

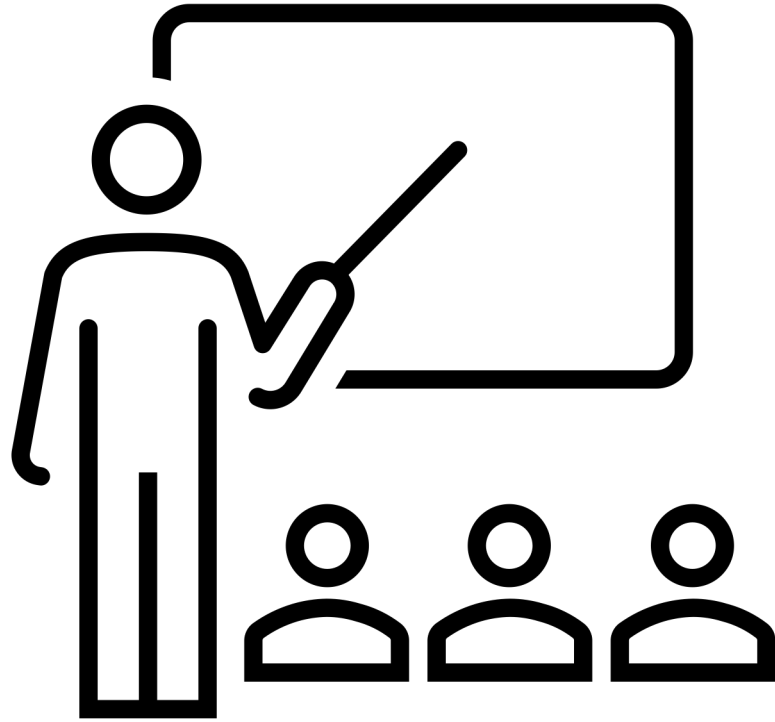
COMMUNITY

Orama (Great Barrier Island) 19

Ad Astra Boarding Hostel 20

CONSERVATION

Kaimahi for Nature 22



EDUCATION PROJECTS

AMURI AREA SCHOOL



Amuri Area School

AIM OF THE PROJECT

To educate and support young people and raise student achievement.



VOLUNTEER REQUIREMENTS

Volunteers need to have a love of the outdoors and people, especially children. You will be working one on one or with small groups of students aged between 5 and 18. The community is small and located rurally, so a Driver's License and the ability to purchase your own car (or share costs with the other volunteer) is highly preferred.

This is a 6-month placement with the possibility of an extension to 12-months.

VOLUNTEER TASKS

Provide one-on-one support for children with learning difficulties, assist teachers in the classroom with literacy and numeracy, assist children with special needs, supervise school sport, schoolyard duty, and more.

NUMBER OF ACVE VOLUNTEERS

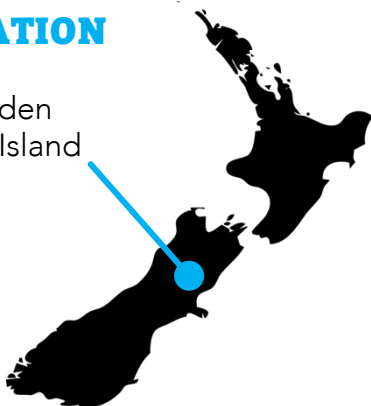


HOST SITUATION

Accommodation is shared in a fully furnished house with the other volunteer and a staff member. It is walking distance to the school. Each bedroom has its own en-suite bathroom. Meals are self-catered with funds supplied by the project.

LOCATION

Culverden
South Island



QUICK LOOK

Work with children/youth	●●●●●●
Work with disabilities	●●●●○○
Work with adults (non-staff)	●○○○○○
Work outdoors	●●○○○○
Variety of tasks/jobs	●●●○○○
Proximity to town/city	●○○○○○
Internet connectivity	●●●●○○
Cellphone reception	●●●●○○

HŌHEPA SCHOOL



Hōhepa
every life fully lived

AIM OF THE PROJECT

To provide education and life skills programs for school students (aged 7-21) with intellectual disabilities.



VOLUNTEER REQUIREMENTS

A challenging but deeply rewarding project. Volunteers must have empathy and interest in working with young people with special needs and childhood trauma. You must want to invest in others and go outside of your comfort zone. Important qualities are patience, caring personality, flexibility, good listener, being active and open to new experiences. You must be completely trustworthy to keep private information confidential. You will always put the welfare of the students first and foremost. **It is preferred that volunteers can commit for 12 months.**

VOLUNTEER TASKS

Assist the class teacher to deliver learning programs, supporting students in their learning and behaviour. You will be required to build strong relationships and trust with the students and teachers. Tasks may include teaching assistance, behaviour management, helping students with personal hygiene and eating, and facilitating individual learning, sometimes one-on-one.

NUMBER OF ACVE VOLUNTEERS

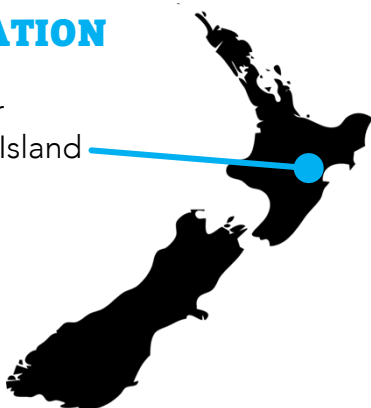


HOST SITUATION

A private bedroom in a staff hostel on-site with other volunteers from different organisations. Shared bathroom and kitchen facilities. Cook your own meals with a food allowance provided and lunch during working hours.

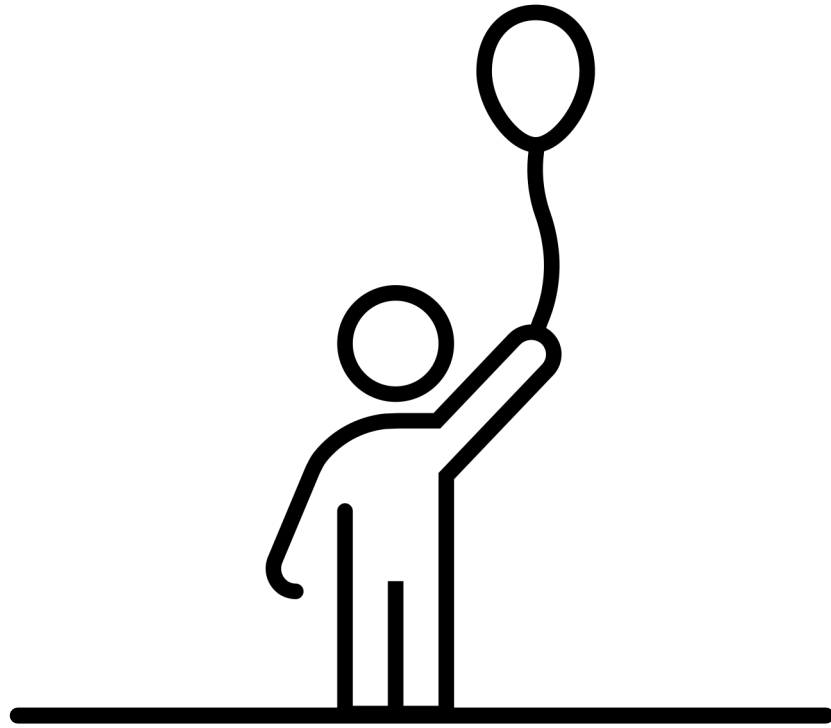
LOCATION

Napier
North Island

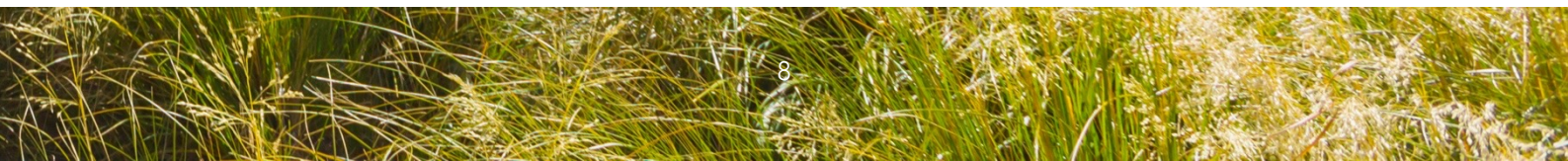


QUICK LOOK

Work with children/youth	●●●●○
Work with disabilities	●●●●●
Work with adults (non-staff)	●●○○○
Work outdoors	●●●○○
Variety of tasks/jobs	●●●●○
Proximity to town/city	●●●●○
Internet connectivity	●●●●○
Cellphone reception	●●●○○



CHILD & YOUTH CARE PROJECT



HOLMONDELEY CHILDREN'S CENTRE



Cholmondeley
whakanuia a totou tamariki value our children

AIM OF THE PROJECT

A home for children aged 5-12, to alleviate immediate family pressures when usual supports are not enough or not available.



VOLUNTEER REQUIREMENTS

A passion for kids, with patience and energy to look after children with different backgrounds and issues. You must be able to engage fully with the children. CCC's care is centered on the child, enabling them to celebrate the experience of childhood. Volunteers must have good role modelling qualities, be mature, sensible and extremely trustworthy. You live and work very closely with other volunteers so must be flexible, patient, open-minded and diplomatic.

Due to the strict nature of CCC's requirements, ACVE may reassess your placement at anytime. A Driver's Licence is highly recommended as there is no public transport from CCC to town.

VOLUNTEER TASKS

You will look after the children and supervise their daily life, including meals, recreational activities and bedtime routines. Participate and support the team in outdoor activities. Some cleaning and kitchen work. Volunteers work at different times in duos, so you must be OK with shift-work. Usually being: Morning 6.30am-3pm or Afternoon 2.30pm-11pm.

NUMBER OF ACVE VOLUNTEERS

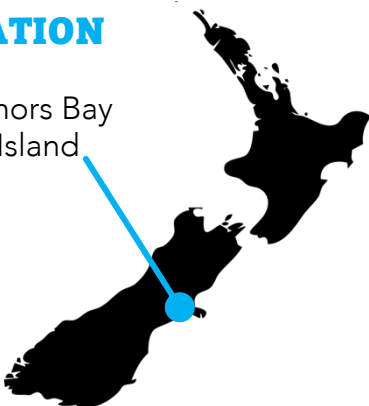


HOST SITUATION

Your own bedroom in a volunteer house that is onsite. Meals are mostly self-catered with ingredients supplied.

LOCATION

Governors Bay
South Island



QUICK LOOK

Work with children/youth	●●●●●●●●
Work with disabilities	●●●●○○
Work with adults (non-staff)	○○○○○○
Work outdoors	●●●●●○
Variety of tasks/jobs	●●●●●○
Proximity to town/city	●●○○○○
Internet connectivity	●●●●●○
Cellphone reception	●●●●●○



ADVENTURE CAMP PROJECTS

FINLAY PARK



AIM OF THE PROJECT

To provide a quality camping environment to school aged children, social groups and church groups.



VOLUNTEER REQUIREMENTS

Volunteers need to be team players with lots of energy. A sense of humour is important along with a 'can-do' attitude. Finlay Park is a Christian Camp and would suit a volunteer who is either Christian, or open to and respectful of Christian beliefs. A Driver's Licence is highly recommended. Upon a 12-month commitment, volunteers can receive certification in some outdoor activities and instruction.

This is a 12-month placement. Volunteers need to be prepared to commit for a full year.

VOLUNTEER TASKS

The volunteer will have a rotation of tasks such as grounds work, cleaning, maintenance and instructing activities like go-carting, paint ball, kayaking, SUP, archery, and running sports programs.

NUMBER OF ACVE VOLUNTEERS

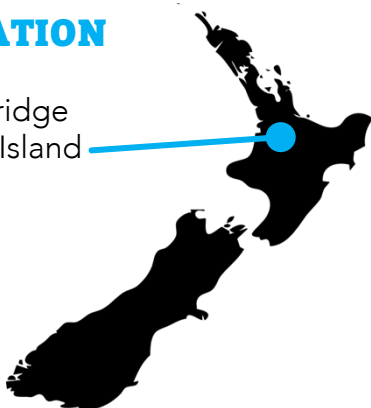


HOST SITUATION

Volunteers have their own room on-site with ensuite bathroom. Kitchen and living areas are shared. A food allowance payment is given for ingredients so you can self-cater meals.

LOCATION

Cambridge
North Island



QUICK LOOK

Work with children/youth	●●●○
Work with disabilities	○○○○
Work with adults (non-staff)	●○○○○
Work outdoors	●●●●○
Variety of tasks/jobs	●●●●○
Proximity to town/city	●●●○○
Internet connectivity	●●●●●
Cellphone reception	●●●●○

LIVING SPRINGS



Living Springs
'people living life'

AIM OF THE PROJECT

To provide a quality environment with exceptional service and programs for school camps, conferences and events.



VOLUNTEER REQUIREMENTS

Volunteers work closely with staff to facilitate amazing experiences for groups that visit Living Springs. Everyday is different as we offer flexible programs to suit each group. A love of outdoor pursuits would be an advantage, as is an interest in working with children (mostly between ages 7-13), as well as cooking, hospitality, construction and animals. Be prepared to work hard at having fun!

Volunteers ideally need to have a Driver's Licence.

VOLUNTEER TASKS

It is asked that the volunteers help in any capacity that is needed and to participate in tasks such as housekeeping and grounds, building maintenance, instructing activities, kitchen work, and occasionally feeding farm animals.

NUMBER OF ACVE VOLUNTEERS

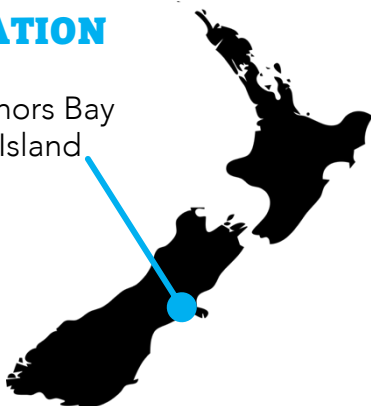


HOST SITUATION

Bedrooms are private single rooms in a volunteer house on-site. Shared bathroom and living areas. Meals are self-catered with ingredients supplied. The Living Springs property also hosts the Kaimahi for Nature project, which gives a fantastic volunteer community to this location.

LOCATION

Governors Bay
South Island



QUICK LOOK

Work with children/youth	●●●○
Work with disabilities	●○○○○
Work with adults (non-staff)	●○○○○
Work outdoors	●●●●○
Variety of tasks/jobs	●●●●○
Proximity to town/city	●●○○○
Internet connectivity	●●●●○
Cellphone reception	●●●○○

LAKES RANCH



Lakes Ranch
CHRISTIAN CAMP

AIM OF THE PROJECT

To provide a rustic adventure camp experience for Christian and non-Christian guests of all ages to enjoy in the geothermal location of Rotorua.



VOLUNTEER REQUIREMENTS

Volunteers need to be great team players and be ready to work hard with various activities. Knowledge and experience with horses would be an advantage.

Having your Driver's Licence is highly recommended, and having your own car is encouraged as the township of Rotorua is a 20-minute drive away, with no public transportation from the camp to town (although you can often get a ride to town with others if required).

VOLUNTEER TASKS

There is a rotation of tasks including building projects, cleaning, assisting programs, instructing activities, hosting groups and kitchen duties. Volunteers may work with horses, so experience in this area is ideal. If you are there in August, you may also assist with the annual Tough Guy and Gal Mud Run Challenge!

NUMBER OF ACVE VOLUNTEERS

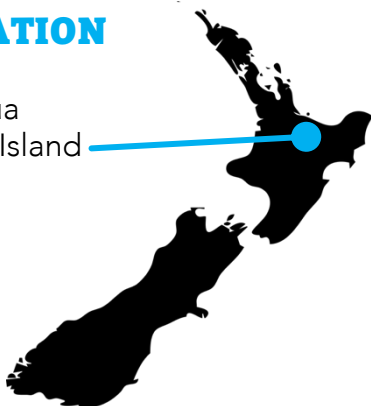


HOST SITUATION

Food and accommodation is provided in a flatting situation. You can eat with the staff in the dining hall when groups are in, or you can cook as a team within your flat. A food allowance payment is given to buy your own ingredients for self-catering.

LOCATION

Rotorua
North Island



QUICK LOOK

Work with children/youth	● ● ● ● ● ○
Work with disabilities	● ○ ○ ○ ○ ○
Work with adults (non-staff)	● ● ● ● ○ ○
Work outdoors	● ● ● ● ● ○
Variety of tasks/jobs	● ● ● ● ● ○
Proximity to town/city	● ● ● ● ○ ○
Internet connectivity	● ● ● ● ○ ○
Cellphone reception	● ● ○ ○ ○ ○

EL RANCHO

El RANCHO

AIM OF THE PROJECT

To provide quality accommodation, facilities, activities and kids camps to schools, churches and community groups.



VOLUNTEER REQUIREMENTS

Volunteers will need to be team players who are flexible, willing to serve and love kids.

El Rancho is an empowering Christian community, so you will need to feel comfortable with this and – if not a Christian yourself – be respectful of Christian beliefs.

VOLUNTEER TASKS

Volunteers are given rostered work including housekeeping, kitchen work, activities, facilities areas. Office work may be an option. Tasks could include wash up, food preparation, baking, instructing activities, cleaning the units and gardening.

Examples of activities include kayaking, raft building, go karts, archery, rock wall, crate stack, horses, tubing and slingshot paint ball.

NUMBER OF ACVE VOLUNTEERS

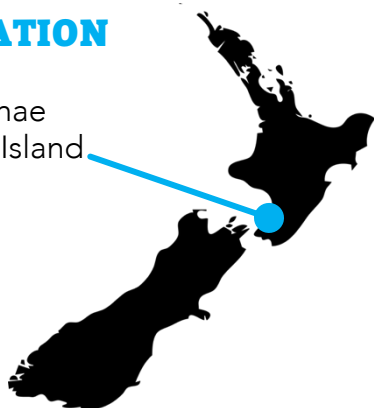


HOST SITUATION

Accommodation and food is provided onsite. Volunteers have their own room and share bathrooms and living spaces, so need to be comfortable with this. Some meals are supplied by the camp, otherwise a food allowance payment is given to get groceries for self-catering.

LOCATION

Waikanae
North Island



QUICK LOOK

Work with children/youth	●●●○
Work with disabilities	●○○○
Work with adults (non-staff)	●●○○
Work outdoors	●●●●○
Variety of tasks/jobs	●●●●○
Proximity to town/city	●●●●○
Internet connectivity	●●●●○
Cellphone reception	●●●●●

CAMP RAGLAN



AIM OF THE PROJECT

To provide a quality camping environment to children, social groups and churches, in the beautiful and funky little beach town of Raglan.



VOLUNTEER REQUIREMENTS

You must be a team player, have a good sense of humour and a 'can-do' attitude! Camp Raglan is a Christian Camp, and would suit a volunteer who is Christian or at least open to, and respectful of, Christian values and beliefs. People who enjoy having time on their own and being in a small team should apply! A Driver's Licence and ability to purchase a car (or shared with other volunteers) is highly recommended.

This is usually a 12-month placement. Volunteers need to be prepared to commit for a full year.

VOLUNTEER TASKS

The volunteer will have a rotation of tasks, such as kitchen work, grounds work, cleaning, housekeeping and instructing activities to school leaders. Activities include air rifles, archery, climbing wall and more.

NUMBER OF ACVE VOLUNTEERS

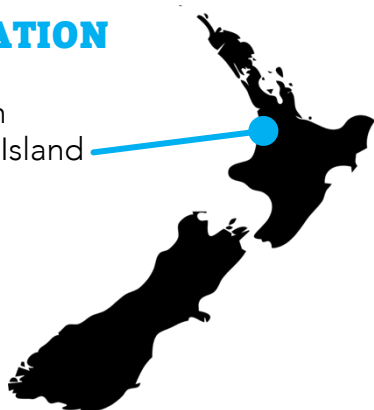


HOST SITUATION

You have your own bedroom in a small cabin on-site, shared with other volunteers. Shared bathroom and kitchenette. Meals are included at the camp, although at times the volunteers will need to cook their own meals with ingredients supplied by Camp Raglan.

LOCATION

Raglan
North Island



QUICK LOOK

Work with children/youth	●●○○○○
Work with disabilities	●○○○○○
Work with adults (non-staff)	●●●○○○
Work outdoors	●●●○○○
Variety of tasks/jobs	●●●●○○
Proximity to town/city	●●●○○○
Internet connectivity	●●●●○○
Cellphone reception	●●●●●●

WOODEND CAMP



AIM OF THE PROJECT

To provide an excellent camping experience for all guests – maintaining a high standard of service that engages and encourages all participants.



VOLUNTEER REQUIREMENTS

Volunteers must be willing to fit into a strong team culture with high standards. They should be very empathetic for others and be team players. All volunteers will be expected to uphold the camp's codes of conduct and values, which are Christian-centred. While there is no faith requirement for volunteers, volunteers need to respect the camp's beliefs.

All required skills will be trained. A Driver's Licence is preferred.

Volunteers need to be comfortable having time by themselves and be willing to put themselves out into the community to meet people and make the most of this incredible location.

VOLUNTEER TASKS

The volunteer will be involved in a variety of tasks, including instructing activities, maintenance of grounds/buildings, cooking, and working with adults and children.

NUMBER OF ACVE VOLUNTEERS

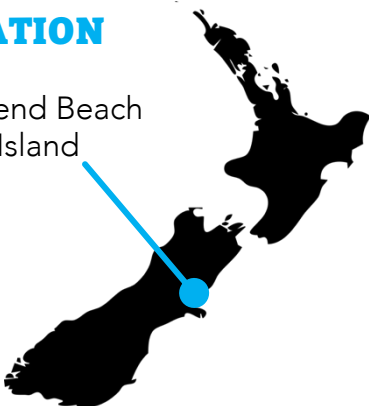


HOST SITUATION

Living in a flat on-site, with own bedroom. Meals included, with some cooking and self-catering required with ingredients supplied by the camp.

LOCATION

Woodend Beach
South Island



QUICK LOOK

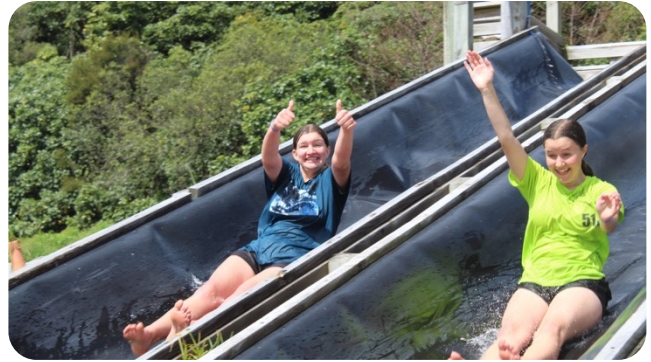
Work with children/youth	●●●●●●
Work with disabilities	●●○○○○
Work with adults (non-staff)	●●●●●○
Work outdoors	●●●●●○
Variety of tasks/jobs	●●●●●○
Proximity to town/city	●●●○○○
Internet connectivity	●●●●●●
Cellphone reception	●●○○○○

MICAMP



AIM OF THE PROJECT

To provide an outdoor experience that benefits young people physically, socially and spiritually.



VOLUNTEER REQUIREMENTS

Volunteers need to be energetic and enthusiastic. Candidates need to come with a joyful spirit, a 'can-do' attitude and willingness to fit in wherever needed.

Skills in any of the following areas would be an advantage – outdoor pursuits, kitchen hand, working with young people and maintenance.

VOLUNTEER TASKS

A rotation of tasks including housekeeping, catering and serving, grounds and building maintenance, cleaning and logistics, and instructing activities.

Volunteers may be based fulltime in either the Taupo camp or Whakamaru camp, which will be assigned by the managers. There will be times where all staff work together.

NUMBER OF ACVE VOLUNTEERS

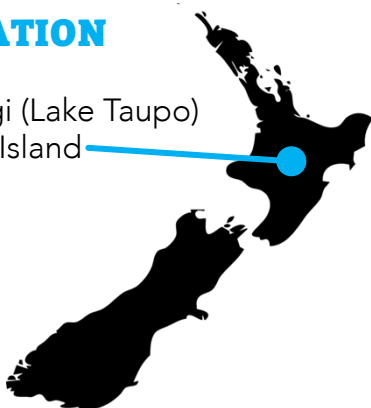


HOST SITUATION

Food is provided in camp. Some self-catering may be required with ingredients supplied. Accommodation is provided within a flatting situation with other volunteers and staff on-site.

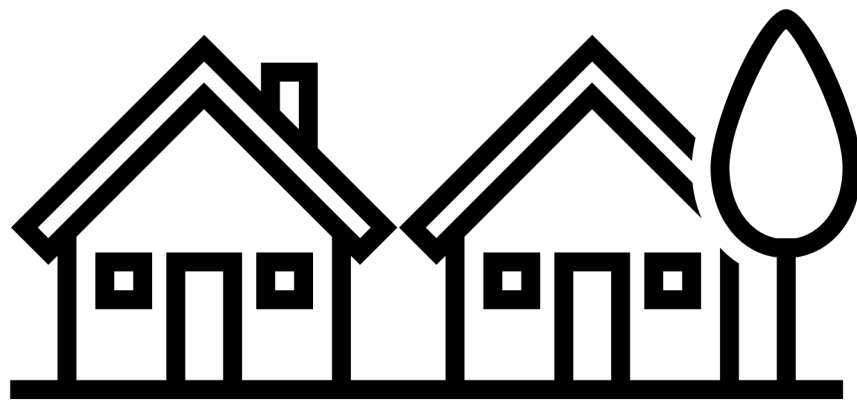
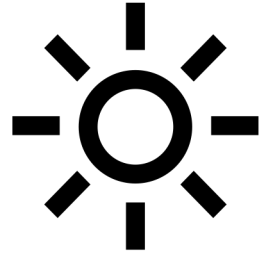
LOCATION

Turangi (Lake Taupo)
North Island



QUICK LOOK

Work with children/youth	●●○○○○
Work with disabilities	●○○○○○
Work with adults (non-staff)	●●○○○○
Work outdoors	●●●●○○
Variety of tasks/jobs	●●●○○○
Proximity to town/city	●●●○○○
Internet connectivity	●●●●○○
Cellphone reception	●●●○○○



COMMUNITY PROJECTS

ORAMA



AIM OF THE PROJECT

A dynamic Christian community based on Great Barrier Island, providing spiritual retreats, recovery programs & adventure.



VOLUNTEER REQUIREMENTS

Volunteers will be living and working on the beautiful Great Barrier Island, 90km from Auckland in a small community. Connections are available daily, either by Flight (30min) or Ferry (5hrs). The volunteers are asked to do physical work and will be trained to use some farm machinery. The work will involve occasional extra hours and some weekend work. Orama has a Christian heritage and focus that the volunteers should be willing to respect. The weather may vary from stunningly beautiful to inclement. You will need to be ready for remote, island-style living – a very different but incredible opportunity to experience!

VOLUNTEER TASKS

Volunteers' duties may include kitchen work (such as food preparation, baking and cleaning), general cleaning and housekeeping, gardening, repair and maintenance, equipment care, planting and harvesting vegetables, and function room setup. Recreational activities for volunteers to do in their spare time include swimming, fishing, kayaking, rock-climbing, tramping, staying in DOC huts, snorkeling, surfing and hiking.

NUMBER OF ACVE VOLUNTEERS

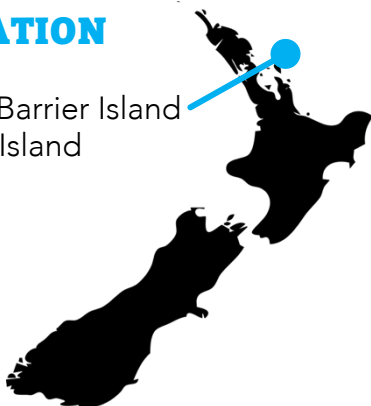


HOST SITUATION

Accommodation is on-site within a self-contained unit. Most meals are served with the project, however you will self-cater some days with ingredients supplied.

LOCATION

Great Barrier Island
North Island



QUICK LOOK

Work with children/youth	● ○ ○ ○ ○ ○
Work with disabilities	○ ○ ○ ○ ○ ○
Work with adults (non-staff)	● ● ● ● ○ ○
Work outdoors	● ● ● ● ○ ○
Variety of tasks/jobs	● ● ○ ○ ○ ○
Proximity to town/city	○ ○ ○ ○ ○ ○
Internet connectivity	● ● ● ● ○ ○
Cellphone reception	○ ○ ○ ○ ○ ○

AD ASTRA BOARDING HOSTEL



AIM OF THE PROJECT

To provide a homely and positive environment for teenage girls to excel within their lives and studies at Whanganui Girls' College.



VOLUNTEER REQUIREMENTS

This project is for female volunteers only, as you will be working and living with teenage girls attending Whanganui Girls' College. Some of these girls may come from quite difficult backgrounds. You need to be outgoing, friendly, mature, caring and comfortable working with teenagers. A strong work ethic is a must, as is initiative and being very proactive!

The work is challenging, yet can be truly rewarding when you make the effort to develop strong connections with the students. You will not be teaching at the school but assisting at the hostel.

VOLUNTEER TASKS

Tasks include assisting the operations of the hostel, such as cleaning, laundry, kitchen work, cooking and some maintenance like mowing lawns & painting. You will also supervise early morning routines with the students, assist them with study and homework, supervise activities, and provide care and support. You may be required to help staff with group activities and weekend work. Volunteers will also need to initiate and lead activities with the girls.

NUMBER OF ACVE VOLUNTEERS

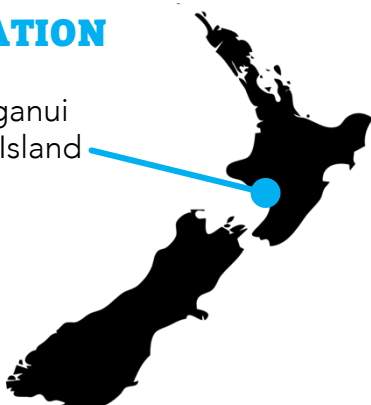


HOST SITUATION

Accommodation is a small single room with shared bathroom, close proximity to the students' rooms so maturity and role-model behaviour is a must. Meals are provided with students.

LOCATION

Whanganui
North Island

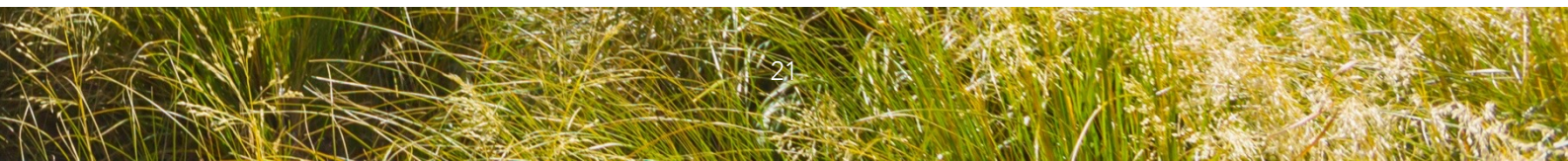


QUICK LOOK

Work with children/youth	●●●○
Work with disabilities	○○○○
Work with adults (non-staff)	●○○○○
Work outdoors	●●○○○
Variety of tasks/jobs	●●○○○
Proximity to town/city	●●●○○
Internet connectivity	●●●○○
Cellphone reception	●●●●●



CONSERVATION PROJECT



KAIMAHI FOR NATURE

KAIMAHI FOR NATURE



AIM OF THE PROJECT

To enhance the biodiversity of Living Springs and Allandale Valley, working towards becoming a leading eco-sanctuary within Lyttelton Harbour.



VOLUNTEER REQUIREMENTS

This is an outdoor conservation project that demands a high level of physical fitness. You will be working in rugged terrain in variable weather conditions. Volunteers need to be organised and conscientious. Having experience operating outdoors in the wilderness is helpful but not a requirement. You must be a great team player, as well as reliable for working autonomously. You will need a strong work ethic and be free from pre-existing injury or illness.

You should be passionate about conservation, be open to the Māori cultural ways of caring for the environment, and be willing to learn about NZ species and conservation.

VOLUNTEER TASKS

Tasks include checking traps for pests, disposal of pests, removing invasive plant species, planting native trees, monitoring other pest species (freshwater, lizards and birds), maintaining and building fences, bridges and tracks, cutting new trails, and operating machinery and tools. Tasks may include some teaching of environmental topics, such as birds, invertebrates and reptiles, to children.

NUMBER OF ACVE VOLUNTEERS

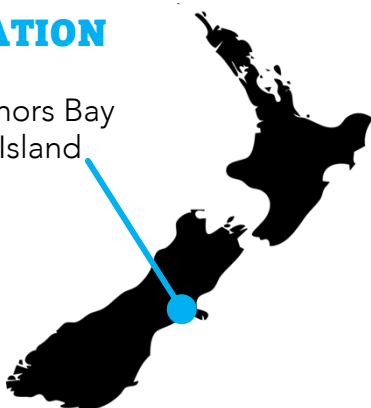


HOST SITUATION

Kaimahi is on the same property as Living Springs. Bedrooms are private rooms in a volunteer house. Shared bathrooms and living areas. Meals are self-catered with ingredients supplied.

LOCATION

Governors Bay
South Island



QUICK LOOK

Work with children/youth	● ○ ○ ○ ○ ○
Work with disabilities	○ ○ ○ ○ ○ ○
Work with adults (non-staff)	● ● ● ● ● ○
Work outdoors	● ● ● ● ● ●
Variety of tasks/jobs	● ● ● ● ● ●
Proximity to town/city	● ● ○ ○ ○ ○
Internet connectivity	● ● ● ● ● ○
Cellphone reception	● ● ● ● ● ○



PROJECT LIFE



CONTACT

If you have any questions about your application, please contact your ICYE National Committee supervisor.

WE LOOK FORWARD TO SEEING YOU IN NEW ZEALAND!