



ECUADOR Work Profile



2025-2026

01

Versión II- 2024

INDEX

Letter.....	3
Types of projects.....	4
What to expect with your project.....	6
Diet and vacations.....	7
Spanish and visa.....	8
Projects.....	9
Children and Youth.....	10
Arts and Culture.....	29
Special Needs.....	33
Gender and Human Rights.....	39
Environment.....	45
Administration and Communications.....	51

LETTER



Dear volunteers to Ecuador,

Welcome! We are very excited that you will be joining the VASE community as a volunteer, and we are sure that you will have a very rich and rewarding experience in a beautiful country!

This document is designed to give you a general idea of the projects and types of volunteer work that are available to you here in Ecuador, as well as to give you a better idea of what to expect overall.

By working in our projects, you will have a unique opportunity to experience and learn about Ecuador, to improve your Spanish, and to grow in many ways you might not even imagine.

Volunteering is an experience that comes with many rewards, and also challenges. Whether it be in the project, in your host family (or group accommodations), or in the culture in general, you can expect to go through some highs and lows. The key is to come with a desire to learn and to grow as much as you can, and your success will depend on your attitude and sense of initiative in facing the challenges.

See you soon,
VASE team.

TYPES OF PROJECTS

You will realize that this document is divided by different theme or categories, including ecological, educational, arts and cultural, human and gender rights, and more.

If you do not see the category you are looking for, don't worry, just let us know! There are many projects that could include exactly what you are looking for.

We work very hard to offer a wide variety of projects to fit the diverse interests of our volunteers, and do our very best to ensure that you are placed in a project that fits.

However, please understand that sometimes the project you

hoped may not be available, so we cannot guarantee your first choices. In those cases, we always do our best to get to know your interests so that we can find similar projects for you, that might even be better!



KEY WORDS TO UNDERSTAND THE TYPES OF PROGRAMS:

LT:

Long Term

STEPS:

Short Term

IJFD:

German Funded
Programme
(Internationaler
Jugendfreiwilligendienst)



WW:

German Funded
Programme:
Weltwärts



**Funded
Grenzenlos:**

Austrian Funded
Organization

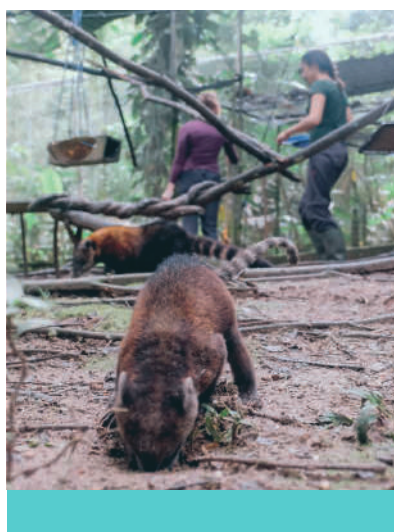


WHAT TO EXPECT WITH YOUR PROJECT



Working hours are usually 30-40 hours per week, from Monday to Friday. Some projects may require work on the weekends, but you will always have two days free per week.

The conditions will depend on what kind of project you are interested in.



For ecological projects, you will likely work long, hard, physically demanding days and live in isolated conditions (internet is not always available, for example), while living in beautiful natural settings with fresh air.



Some projects will require more initiative to start your own projects or find your own way to be useful.

Others might be more structured and with less flexibility to bring your own touch; it all depends on the project.



Diet

While Ecuador provides a range of healthy local products to sustain all dietary needs, we ask that volunteers with special dietary requirements come prepared to actively participate in food preparation or bringing recipes or ideas of how family can accommodate to your needs using local products.

Vacations

Long-term volunteers get 2 vacation days per month, up to 12 days (6-month volunteers) or 24 days (12-month volunteers), plus Ecuador's official holidays. Plan your vacation with your project during your first weeks—never before arrival. Some projects may pause, requiring vacations then.

***Please look at the National Profile to have more information.**



Spanish

We strongly recommend that all volunteers arrive with at least a basic level of Spanish.

Many projects do not require that you already know the language, but it is important that you are committed to learn before coming. Considering that it will be much easier and faster to adapt to your project and family, due to most of the Ecuadorian people not knowing a good level of English.

Visa

Since your stay will exceed 180 days, you must obtain a temporary residency visa before traveling.

VASE requires you to enter Ecuador with this visa. Ensure all necessary documents are ready before applying. Start the process early and apply for the visa at least four weeks before your travel date.

OUR PROJECTS



CHILDREN AND YOUTH



“ It is never too late to have a happy childhood.”

-Tom Robins

It is true when they say that children and adolescents are the future of societies, but working with them in their education and promoting their development in the present is what will generate a positive impact on their lives and their environment. In Ecuador, the education and development of children and youth has slowed down due to poverty and lack of opportunities.

There are many cases in which their family and social backgrounds are very complicated, which does not allow them to prioritize their studies and recreational activities. The projects we work with have various approaches, but they all seek to generate opportunities in the present and future of children and youth who live difficult realities. We must remember that there is always a moment in childhood when the door opens and lets the future in.



*If you want more details, contact us to schedule a meeting.

ASA Asociación Solidaridad y Acción

Location

Quito - Pichincha

Type of project

Children and youth/Education



Aims of the project

ASA seeks to respond to current social problems and improve the quality of life of the most vulnerable people in the sector. They work to help families, children and adolescents in difficult situations to move forward by focusing on different areas.

Activities

Currently, ASA manages and accompanies its services in the following areas:

- Family Support: Institutional Foster Care, Family Support, Home Assistance.
- Education: Children's Centers, Family and Community Learning and Integration Centers, Libraries, "Acuarela" Educational Unit.
- Development and autonomy: Production, workshops, Commercialization and Training.

Community Context

The project is located in an urban, but outlying and rather poor area in the north of Quito. The majority of adults living there work as domestic servants and construction workers in nearby upper-class communities.

Volunteer's requirements

Volunteers require skills for working with children and adolescents (from 2-15 years old), such as: patience, initiative, energy and joy. A basic knowledge of Spanish is required.

Volunteer's tasks

The volunteer will help the educators with activities including:

- Planning classes and taking care of the children
- Practice sports and recreational activities (games, music, art)
- Distributing and examining worksheets and preparing materials
- Playing outdoors and helping to keep the kindergarten's spaces tidy
- Distributing lunch among the children
- Participation in handicraft and English classes in the afternoon.

Timetable: Monday to Friday

Host situation

Host family/Volunteers house

Programs

LT, STEPS, IJFD, WW

Caminitos de Luz



Location

Tumbaco, Quito – Pichincha

Type of project

Children and youth/Education

Aims of the project

The aim of the school is to give the children of the surrounding area the opportunity to receive an excellent education including English classes and also have food at school.

Activities

The day starts at 7:40am with the children having breakfast, later they have classes including among others English, Computer Science and Physical Education. At 10am the classes are interrupted by a snack. At 1:30 pm their parents pick them up.

Community Context

El Arenal is an area approximately one hour from Quito, which is located near the Valley "Tumbaco". Caminitos de Luz is situated in a rather rural area. Despite the fact that there are some fancy houses, the majority of people do not have many resources.

Volunteer's requirements

The volunteers should like to work with children and feel comfortable playing with them, teaching them and taking care of them. Volunteers also must be very proactive, flexible and be ready to help in any need of the school. Basic Spanish skills are helpful but not necessary.

Volunteer's tasks

The volunteer can participate in a variety of tasks such as:

Supporting the staff in any way

Helping to teach English

Planning classes and taking care of the children

Recreational activities: outdoors games, workshops, theater plays, etc.

Timetable: Monday to Friday 7:30am – 1:30pm

Host situation

Host family

Programs

LT, STEPS, IJFD, WW

Henry Davis Foundation



Location

Valle de los Chillos, Quito - Pichincha.

Type of project

Children and youth/Education

Aims of the project

The aim of the school is to give children in vulnerable situations the chance to get an education, psychological support and help regarding their family situation.

Activities

The foundation provides Institutional foster care services for children and adolescents at risk. Food, education, professional psychological services and all the necessary services to properly care for minors. They also provide basic general education services from preschool to high school.

Community Context

Valle de los Chillos is a geographical area located in the southern eastern part of the City of Quito in Ecuador; in addition to housing the Rumiñahui district with its capital Sangolquí.

It has a subtropical climate that ranges between 10 °C and 29 °C throughout the year.

Volunteer's requirements

The volunteers should like to work with children and feel comfortable playing with them, teaching them and taking care of them. Volunteers also must be very proactive, flexible and be ready to help in any need of the school. Basic Spanish skills are helpful but not necessary.

Volunteer's tasks

The volunteers will have support, supervision and guidance from the main teachers. They are not alone with the children at any time, they will work hand in hand with the teacher/tutor in the different areas of the school, mostly in the english lessons.

Host situation

Host family

Programs

LT, STEPS, WW

Centro del Amanecer



Location

Tumbaco, Quito – Pichincha.

Type of project

Children and youth/Education

Aims of the project

The project offers alternative, integrative and inclusive education according to Montessori to about 40 children aged 3 to 12 years as well as their parents (mostly with low income). They have 3 “classes” with their own small buildings and 4 teachers. The school’s objective is to offer a personalized, active and playful education in harmony with the environment not depending on the children’s age, but respecting their psychological maturity and development, avoiding authorial guidance. Part of the school’s daily life is that the parents help alternately, focusing on the agricultural projects, the excursions, the cooking-project, etc.

Activities

The schooldays begin at 8am when the children arrive with the school bus. The classes normally last until 12pm. Sometimes they eat lunch together at school depending on if the cooking-project takes place. Once a week the parents come to the school to help build e.g. a jungle gym.

Community Context

The school is located on a huge property in a rural area about 5 km from Tumbaco. There is no good public transport.

Volunteer’s requirements

We are looking for a volunteer who has basic Spanish skills, a lot of patience, who is active and interested in alternative teaching methods and working with children. Preferably a male volunteer, but females are welcome as well!

Volunteer’s tasks

Depending on where the volunteer lives, he/she starts to work at 7 or 8am when the school bus picks him/her up and brings him/her to school. There he/she should already take care of the children. Throughout the day, the volunteer helps with all tasks pending. Helping the children with their breakfast, playing with the children (especially outside where they spend a lot of time), helping the teachers in the classes and preparing materials after classes, accompany excursions, support different projects like gardening and help to repair/build different things together with the children’s parents once a week. Working hours are from 7 or 8am until 12pm (except if there are meetings or special projects), Monday to Friday.

Host situation

Host family/Volunteers house

Programs

LT, STEPS, WW

Centro una familia de familias



Location

Quito - Pichincha

Type of project

Children and youth/Education

Aims of the project

Centro una familia de familias provides education and technical training to children and families that work in the street.

Activities

The project provides basic education (high school degree) for all members of the family, while allowing children to maintain their jobs on the street (selling gum, shining shoes, etc.). Then, once they obtain their high school diploma, they can specialize in a variety of subjects from Mechanics, to Sewing, to Carpentry.

Community Context

This organization was founded by retired Catholic priests over 45 years ago. It is extremely well structured with great staff. The center has served over 3,000 families and is one of the most well known organizations in Latin America. In Quito there are two centers: one in the historical center and a larger one in the north of Quito.

Volunteer's requirements

Very good level of English and Spanish, being hardworking, proactive and willing to work 8 hours a day. The Center only accepts volunteers starting in August.

Volunteer's tasks

Support in a variety of subjects depending on interests (day care, English, computation, adult education, etc.), help in one of the technical areas (carpentry, mechanics, sewing), play sports, help in communal areas such as the library.

Host situation

In the Center in the North of Quito there is a big volunteer house, with private rooms and private bathrooms. There is internet connection in the house and you have 3 daily meals (you can also make your own food if you prefer). Volunteers also have the option to live with a host family.

Programs

LT, STEPS, IJFD, WW

Caritas de Esperanza



Location

Azama de Esperanza, Otavalo – Imbabura.

Type of project

Children and youth/Education. Special needs

Aims of the project

Caritas de Esperanza provides kids from the age of one with care, food, cognitive development, pedagogical support and further support in their school tasks and subjects such as mathematics, language, natural sciences, art projects, social studies and English. It also aims to reduce the level of illiteracy in adults.

Activities

At the start of the day, the teachers and volunteers welcome the students and proceed with the activities for the day which include the development of recreational activities, the making of learning material for the kids, helping with the hygiene of the children and facilities and providing 4 meals throughout the school day.

Community Context

Caritas de Esperanza is located in Otavalo, a small town located 95 km north of Quito in the province of Imbabura. Most of its population is of indigenous descent and proudly participate in celebrating their culture. Due to its location it enjoys a cool warm climate between 12 and 20 degrees Celsius.

The project is located in the community of La Esperanza de Azama where families have their plots where they sow for their own consumption and for trade. The main spoken languages are Spanish and Kichwa, although older members of the community may only know how to communicate in the latter.

Volunteer's requirements

The volunteer does not require university studies and should have a basic level of Spanish, they need to be at least 18 years old but there is no maximum age limit. They can be of any gender. The volunteer needs to be open minded, empathetic, patient, have active listening skills, sensitivity, and adaptability.

Volunteer's tasks

- Support in the daily care of children from 1 to 3 years of age.
- Provide support at the time of feeding and hygiene of children.
- Assist in cleaning the facilities.
- Support with homework for children and young people.
- Create spaces for recreation and sports.
- Elaboration of didactic material with the support of the staff.
- Develop talks with families in the community.

It should be noted that the volunteer is a participant in all cultural, recreational and sports activities that are generated during their participation.

Host situation

Host family

Programs

LT, STEPS, WW

Centro de Erradicación del Trabajo Infantil (CETI)

Location

Quito - Pichincha

Type of project

Children and youth/Education



Aims of the project

One center located in the north of the city and five in the south. The project looks to provide a baby care service for the workers of the Markets, preventing child labour and accompaniment. Meanwhile, Mariscal(1) and Carollo (1) receive working and street children from the surrounding area with the purpose of giving them education, food and a shelter while their parents work on the street.

Activities

To provide day care for babies, academic help, and extracurricular activities to older children who work, mostly on the street or markets, and to support their families.

Community Context

The Project is located in three different parts of Quito, the first being in the Mariscal area, the northern center of Quito. The area is very touristic, with lots of bars and night-life. Most of the parents work around there. The second one is located in San Roque, in the historical center of Quito (also a very touristic area) and the third one: Chiriyacu, Carollo and Mayorista is located in the South.

Volunteer's requirements

The volunteer should have a good level of Spanish, preferably be 22-25 years old and experienced in teaching, and be willing to work with children from poor families. Interest in social issues, deep social conscience, passion in working with children, creativity, proactivity and hardworking. The volunteer must be willing to participate in a wide range of tasks. The volunteer must speak basic Spanish.

Volunteer's tasks

Be part of the team. Take care of the children (from one year old and up). Help with homework, lunch and during the educational part of the day, and play with the kids during free time. Help with field trips and various activities and summer camps that are held in August. Also help to plan and prepare various events for the parents. Daily work also includes helping with homework and serving lunch.

Host situation

Host family

Programs

LT, STEPS, IJFD, WW

Chicos de la Calle – Salesianos Project



Location

Quito – Pichincha. And Ambato – Tungurahua.

Type of project

Children and Youth / Orphanage / Education / Sports

Aims of the project

This is a project that seeks to help children and young people in vulnerable situations (who live and work in the streets) in different areas so that they can have all the tools to succeed in their lives.

Activities

The project works in different areas:

"La Marin" and "Pisuli" are considered a safe place for some young people, who come for support school and other things

"Mi Caleta" focuses on helping young people who need a home due to violence or poverty

"Granja Don Juan Bosco de Ambato" is a farm on the outskirts of the city where the focus lays on improving the living conditions of the youths by providing support in education, food and shelter

"Golaso" seeks to support the people in their after school activities and promotes sports in different championships of soccer, basketball, volleyball, etc.

"UESPA" is an educational unit that provides the opportunity for children and youth people to access education, as well as snacks and food

Community Context

This organization is managed by the Salesians and is very catholic and conservative. It works in vulnerable sectors of the city and with more than 150 children/young people.

Volunteer's requirements

The volunteer must have basic Spanish skills, be motivated, and dedicated. Also, the volunteer must be able to work in recreational activities and sports. She/he needs to be a very open-minded and flexible person.

Volunteer's tasks

The volunteer's major task will be to help with homework. She/he will also support and lead a few activities and play with the children. He/he will also help to maintain order in the project. Besides helping in the formal way, the volunteer serves an important role as a mentor for the children and young people. S/he will be part of the "Salesianos" team. Tasks are for example: cleaning, sometimes office work, helping with homework, doing sports and being part of everyday life.

Host situation Host family

Programs LT, STEPS, IJFD, WW

Instituto Suizo "Carlos Álvarez Miño"



Location

Quito - Pichincha

Type of project

Children/Education

Aims of the project

To provide education for over 300 students from 3 - 14 years of age

Activities

This private school has a kindergarten and a school where the children are taught subjects such as Math, Science, English, Social Studies, Physical Education, Music and Computation

Community Context

The community is located in Carapungo, an urban area in the north of Quito. Its climate is quite dry, which makes it less suitable for agriculture

Volunteer's requirements

Very good level of English and Spanish, hardworking, proactive, organized, motivated and committed. S/he must be patient and like to teach.

Volunteer's tasks

Depending on their skills and desire, the volunteer can assist in English classes, considering that the highest needs are in English. They also have the possibility to assist the English teacher in the kindergarten. If they are doing well and enjoy their job they can also take on the responsibility of teaching their own classes if they want to.

Host situation Host family

Programs LT, STEPS, IJFD, WW

Instituto Suizo “William Tell”



Location

Quito - Pichincha

Type of project

Children/Education

Aims of the project

Provide education to over 200 students from 3-12 years of age.

Activities

The project is divided into a kindergarten and a school where the children are taught subjects such as Math, Science, English, Social Studies, Physical Education, Language and Computation.

Community Context

The project is located in La Planada, an urban, but remote area in the north-west of Quito about 3000 meters above sea level. In the morning it is quite cold, later it can be sunny and hot. The population is quite poor and the majority of adults work as domestic servants and construction workers in nearby upper-class communities. The director's family lives next to the school which helps cultivate a close community atmosphere.

Volunteer's requirements

The volunteer must have good or very good English skills. He/She should be organized, motivated, proactive and should like the interaction with small children. Previous experience with working with children, and ability in the arts would be an asset. He/She should not be afraid of working as an independent teacher. Maturity is a must.

Volunteer's tasks

The volunteer contributes to the school life mainly by working as a teacher. Supported by the Ecuadorian teachers, the volunteer gives English classes of 40 minutes each. Working hours are Monday to Friday, 7:30am-1pm. The volunteer is responsible for teaching and structuring the lessons, giving homework and designing and giving tests.

Host situation Host family

Programs LT, STEPS, IJFD, WW

Schools in Canchagua



Location

Canchagua, Cotopaxi.

Type of project

Children/Education/Social

Aims of the project

The aim of both of the schools located in the parish of the same name, is to generate knowledge in the students of the community taught by the teaching staff, achieving critical, thoughtful students for the development of the country, from nursery level up to Unified General Baccalaureate and Technical Baccalaureate focused on achieving educational quality standards. The main difference between both schools is the number of students (with Escuela del Milenio having around 457, and Charles Darwin around 230)

Activities

While the schools teach a variety of subjects required for the students to graduate, the main area of the project in which the volunteers will be working is teaching English lessons and supporting the English department. However teaching will also be needed in the areas of sciences and nursery.

Community Context

Canchagua is a small parish located 17 km from Latacunga, the capital of the Cotopaxi province. It is surrounded by local flora and most of the population make a living from agricultural and livestock production. Due to its proximity to Cotopaxi and its location in the mountainous region, the weather ranges from 6 to 8 degrees Celsius. Most of the communities in the higher zones speak Kichwa while those in the lower zones speak mostly Spanish. The majority of the population is of indigenous descent, with a few being mestizo, or of mixed race.

Volunteer's requirements

The volunteer must have good or very good English skills. He/She should be organized, motivated, proactive and should like the interaction with small children. Previous experience with working with children, and ability in the arts would be an asset. He/She should not be afraid of working as an independent teacher. Maturity is a must.

Volunteer's tasks

The activities to be carried out by the volunteer within the educational unit is to support the departments and teachers in the area of English, mathematics, physics, biology, chemistry and work with the children of the initial level (1-3 years old).

Host situation

Host family living close to the parish

Programs

LT, STEPS, WW

Granja Montessori



Location

Cayambe, Pichincha.

Type of project

Children/Education

Aims of the project

The aim of the project is to offer different types of therapy to children with and without disabilities, such as equine therapy as well as other extracurricular activities

Activities

The day starts in the morning with a door to door transportation service, the morning group includes kids up to six years of age who partake in activities such as equine therapy, art and cooking classes, and music therapy

Community Context

Cayambe is an agricultural service city in highland Ecuador. It lies at the foot of the Cayambe volcano. While the city is mainly populated by mestizos, the surrounding rural population is primarily composed of indigenous people who are mainly involved in subsistence agriculture, dairy farming and procurement of lumber. It is the third-largest city in Pichincha Province.

Volunteer's requirements

The ideal volunteer profile is someone who is adaptable, willing to learn and orientated towards guidance. They need to be balanced, capable of dealing with frustration, and a person that values respect, empathy, cooperation, sensitivity and compromise, as these are the main principles of the institution.

Volunteer's tasks

The volunteer will always have the support of the tutor and the teachers of each area, they will participate in the different therapy programs they offer as well as environmental conservation projects.

Host situation

Host family

Programs

LT, STEPS, WW

Instituto NOVA



Location

Cuenca, Azuay.

Type of project

Children /Education/ Special Needs

Aims of the project

The aim of the school is to give the children of Cuenca who have disabilities the chance to have a truly inclusive education where the goal is that they can develop independence and can go to a regular school in the future

Activities

The children arrive at school and have a variety of classes according to their developmental needs, these include art, math, music, P.E

Community Context

Cuenca is one of the most beautiful cities in the country, and is split by four rivers, colonial style streets, european style architecture, churches and cathedrals, incan ruins and cultural markets and buildings filled with art and handicrafts. The project itself is located in a safe area in Cuenca that is easy to access by the public transportation system

Volunteer's requirements

The volunteers should like to work with children and feel comfortable playing with them, teaching them and taking care of them. Volunteers also must be very proactive, flexible and be ready to help in any need of the school. Basic Spanish skills are helpful but not necessary.

Volunteer's tasks

The volunteer can participate in a variety of tasks such as:

- Supporting the staff in any way
- Helping to teach English, math, arts
- Planning classes and taking care of the children
- Recreational activities: outdoors games, workshops, theater plays, etc.

Timetable: Monday to Friday 7:30am - 1:30pm

Host situation

Host family

Programs

LT, STEPS, Funded Grenzenlos

Fundación Cielo Azul

Location

Communities in the rural surrounding of Otavalo, Imbabura.

Type of project

Children / Education / Health



Aims of the project

The "Cielo Azul" foundation works in different communities around Otavalo (30.000 people) with indigenous people in their rural schools. At the moment, there are 11 schools cooperating with Cielo Azul". The aim is providing education to the indigenous communities.

Activities

Cielo Azul's schools are located on the outskirts of the city of Otavalo, where classes are given to children and young people from the communities. Activities include agriculture, environmental care, sports, computers, and arts and crafts. As they are community schools, the family of each student is very involved in order to promote development. The mothers prepare the food for the school children and promote the consumption of the products they grow and take care of.

Community Context

The volunteer lives (3-4 days) in a local family in the community during the week. The family offers a simple life and food, living in a rural community environment (Ex. no washing machine, no good wifi sometimes) but volunteers do have telephone signals. Because of this situation we have a flat in the center of Otavalo, with shared rooms, shared spaces (kitchen, living room, etc.). Once a week, the coordinator of the project meets with all volunteers to share experiences, plan activities and work tasks, and resolve problems.

Volunteer's requirements

It's an advantage to speak good Spanish because the local people's mother tongue is Kichwa but the majority speaks Spanish. Volunteers have to be very flexible and adaptable because the schools generally suffer from poor management and so things are always changing a lot. Volunteers have to communicate with people and integrate themselves within their community. Sharing food or activities with the family and the teachers can open doors.

Volunteer's tasks

The volunteer works from Monday to Friday every morning between 8am and 1.30pm. S/he helps in the school in the areas of: English, Sports and Arts or in other areas where help is needed. Depending on the school they will be working at, the volunteer can help in the school garden harvest vegetables for lunch or get active offering workshops or free-time activities for the children. Many families live from agriculture and expect volunteers to help in this task and in their daily activities (e.g. help with the homework).

Host situation

Host Family in the communities and volun-

Programs

LT, IJFD, WW

Sembrar Esperanza



Location

Pomasqui, Quito – Pichincha.

Type of project

Children / Education

Aims of the project

To improve the quality of life of the people that live in at-risk areas and to promote sustainable development.

Activities

The project works with 2 kindergartens: “Violanta y Werner” and “Nuevo Miguelito”. They take care of children between 1 to 6 years old, whose parents have low incomes or with complicated social and family backgrounds. At the project, the educators and volunteers teach the children how to make handicrafts, coordinate group games, and teach good table manners, as well as music and English.

Community Context

The project is located in the district of Santa Clara/Agua Clara close to the “Ofelia” bus station – North of the city. Volunteers can live in an apartment owned by Sembrar Esperanza with another 1-2 volunteers. The apartment is located in Pomasqui, about 30 minutes by bus from the north of Quito.

Volunteer’s requirements

The project needs an orderly, responsible, active, social and dynamic volunteer. He/She should have a basic level of Spanish.

Volunteer’s tasks

The volunteer’s tasks would be to prepare teaching material for the children’s English classes that he/she teaches together with the teacher. Other tasks are playing with the children and helping to do some sports. If the volunteer is musical, he/she should as well help with the Music class.

Host situation

Host family / Volunteer apartment

Programs

LT, STEPS, IJFD, WW

Programa Inclusivo Multicultural Originario Kañari "PRIMOK S.A.S".

Location

Azogues - Cañar.

Type of project

Education



Aims of the project

Since the creation of the PRIMOK S.A.S. The program has focused on teaching the English language to children and young people of the Cañar city and its communities, the teachers have been foreigners who speak this language fluently.

Activities

This Program emerges with the sole purpose of serving the citizens of the Cañar canton and its surrounding communities, providing them with a personalized and quality education and proposing an environment of participation and cultural exchange between diverse groups such as: indigenous, mestizos, foreigners and other ethnic groups.

Promote a bilingual intercultural education from the exchange and interaction that occurs within the educational community during the teaching-learning process. and Promote the tourist development of the canton, province and country as complementary and extra curricular activities of the program.

Community Context

Like most of the cities in the Andean region of Ecuador, the canton of Cañar has very low crime rates, which is why it is considered safe. To be specific, the school is located on Av. 24 de Mayo and Ingapirca Avenue in the center of the city. The travel time from the school to the volunteer's place of residence is 8 minutes by bus; the transportation system is efficient and economical in the canton. 60% of the population of the canton is indigenous, and for this reason the main productive activities are agriculture and livestock. It is located 1 hour from one of the main cities of Ecuador: Cuenca (southern highlands).

Volunteer's requirements

The PRIMOK S.A.S. program focuses on teaching the English language, for this reason it is essential that the volunteer speaks English fluently, it is not necessary to have experience because inside the classroom there will be another teacher from the Cañar canton. It is important that the volunteer has a passion for teaching, is an extrovert, likes to spend time with children and young people and has a vocation to serve and help society.

Volunteer's tasks

The main activity that the volunteers will carry out is to teach English to children from 6 years old to 17 years old from the Cañar canton and its rural communities. They will teach together with another teacher from Cañar who is fluent in Spanish and English. In addition, they must attend training or workshops held by the program's teachers. Conversation clubs (Spanish and English) are also held on Wednesdays and Fridays. In order for the children and youth to learn English properly, it is necessary to plan each of the classes, create activities, dynamics, games, didactic material, projects, online material, conversations, videos, audios, dialogues, readings, and lesson plans prior to each day of classes.

Host situation

Host family / Host Project

Programs

LT, STEPS, Funded Grenzenlos, WW

Hogar Santa Marianita



Location

Ambato - Tungurahua.

Type of project

Children/Education

Aims of the project

To offer a quality and warm service to children and adolescents at risk whose rights are violated, providing them with an Institutional Foster Care based on the Technical Standard and other legal tools with a vision of law and with basic services of health, nutrition, education, psycho-pedagogical care and comprehensive training for the duration of the process aimed at family reintegration, autonomy or adoption.

Activities

- Comprehensive care for children and adolescents in vulnerable situations.
- Social intervention.
- Family accompaniment.
- Home visits.
- Home assistance.
- Psychological care and support.

Community Context

The project is located in the city of Ambato, 2 hours from Quito (capital), a city close to indigenous communities in the Andean region of the country.

Volunteer's requirements

Volunteers require skills for working with children and babies such as: patience, initiative, energy and joy.

A basic knowledge of Spanish is required.

Volunteer's tasks

Accompaniment in recreational activities: games, outdoor activities, hand-crafts, art, sports

Care, homework monitoring, general services and attention to children and preadolescents.

Timetable: Monday to Friday

Host situation

Host family

Programs

LT, STEPS, WW

Tránsito Amaguaña



Location

Quito - Pichincha

Type of project

Children/Education

Aims of the project

The project exists with the purpose of giving education to the children. Great emphasis is put onto the preservation of the indigenous culture. Therefore, the students also have classes in Quichua and Music.

The project also aims to give the children a chance to play, have fun, and truly be kids, as often when the school day ends they must work in the market or return to an unstable home

Activities

The project works as a bilingual school for children whose parents do not have the resources to send them to a school outside the market, where most of them work.

Community Context

The school is located on the grounds of the Mercado Mayorista, a very busy market mainly for wholesalers. The people working in the market are mostly indigenous and come from low socio-economic backgrounds

Volunteer's requirements

The volunteer will need creativity, patience, flexibility, sense of responsibility and the ability to work independently.

The volunteer would also need to be open-minded, as many of the children in the school cannot do tasks such as everyday homework, as they must work in the market with their parents.

Volunteer's tasks

The volunteer would have to work from 7am to 1pm, Mondays to Fridays. He/she would mostly help the teachers at the school and play with the children during the breaks.

Host situation

Host family

Programs

LT, STEPS, IJFD, WW

ARTS AND CULTURE



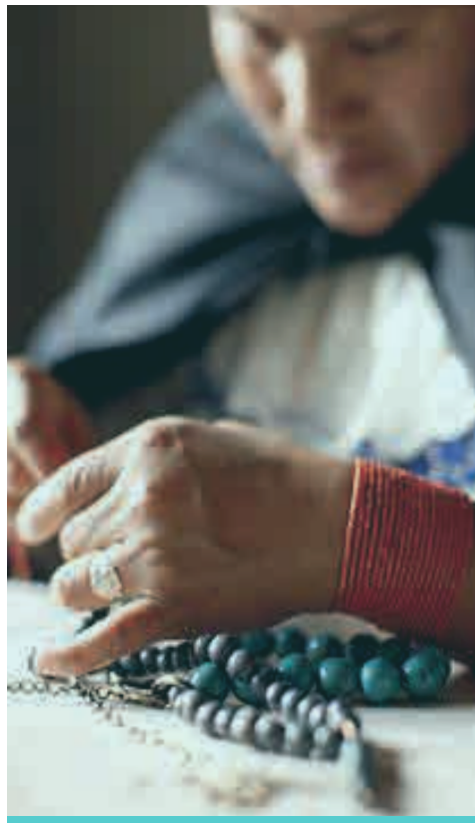
“A nation's culture resides in the hearts and in the soul of its people”

-Mahatma Gandhi

Ecuador is a country rich in art and culture, every part of the country has cultural distinctives that make it diverse, beautiful and unique in the world.

Artists have emerged from the smallest villages as well as from big cities.

Foreigners who come for different reasons fall in love with Ecuador, its people, traditions and art.



*If you want more details, contact us to schedule a meeting.

Faire Collection – Artisan Workshop



Location

Otavallo – Imbabura.

Type of project

Women, arts and culture, social business

Aims of the project

Following fair trade philosophies, principles, and conditions, Faire Collection is a social business which produces handmade artisan jewelry from natural materials, such as palm tree seeds. They have a strong focus on design and fashion, and all their products are made by hand by local women. The mission of the business is to provide work and social security for a marginalized population, and also offer scholarships for local artisans. The majority of their artisans are from the indigenous Kichwa communities.

Activities

Artisans work together in the workshop to make locally designed and inspired jewelry for international clients, using only natural materials.

Community Context

Otavallo is a small and very pretty town populated also by indigenous people. It is a city that is characterized by its culture and the commercialization of handcrafts.

Volunteer's requirements

Any gender, any age. Minimum 3 month commitment. Volunteers need to have at least a basic level of Spanish, medium-advanced is preferred. Skills such as photography, fashion design, or business management are highly desirable. The volun-

Volunteer's tasks

The work schedule is Monday-Friday from 9am to 6pm, with an hour for lunch. They are based in a small workshop where the artisans and administrative staff work. Depending on the skills and interests of the volunteer, his tasks can include:

- Product design (fashion design)
- Production quality control
- Product photography
- Photography of the artisans and the workshop
- Interviews with the artisans and creation of social media stories
- Development of social impact metrics
- Workshop production assistance
- Analytical processes and workflows (Excel documents, prices, inventory, etc.)

Host situation Host family

Programs LT, STEPS, WW

WASMU

Location

Otavallo - Imbabura.

Type of project

Women, arts and culture, social business, administrative



Aims of the project

Contribute to improving the quality of life of women Victims of gender violence, girls and boys, older adults, as well as the rest of the vulnerable groups of the rural and urban communities of the Otavallo canton, through a comprehensive care service; empowering users through capacity building and skills development by including them in the various work sectors such as textiles.

Activities

They work in two areas.

1. Aukera: Accompanying and caring service. Training and capacity building in different topics to empower the users and planning workshops. Dissemination of the service in communities, urban and rural sectors.
2. Tandem: Adequacy of facilities. Comprehensive education and training, waste management, recycling, reuse, sanitation, window dressing, attention, social responsibility, climate change, environmental protection and the SDGs. Training of trainers, solidarity economy models, business models in the textile field, production process.

Training in gender perspective with a rights approach

Defense / defenders of human rights, gender and feminism, conflict management, digital divide / use of new technologies and security.

Adaptation of the store and inauguration

Collection of donated clothing, selection, sanitation, redesign and marketing

Community Context

Otavallo is a small and very pretty town populated also by indigenous people. It is a city that is characterized by its culture and the commercialization of handcrafts.

Volunteer's requirements

Any gender, any age. Volunteers need to have at least a basic level of Spanish, medium-advanced is preferred. Skills such as photography, fashion design, or business management are highly desirable. The volunteer must be flexible to provide support in different areas of the business including administrative tasks.



WASMU

Location

Otavallo - Imbabura.

Type of project

Women, arts and culture, social business, administrative



Volunteer's tasks

Dissemination activities that consist of making face-to-face visits (with a coordinator) to different communities, rural sectors, institutions, associations to promote the benefit of textile reuse and fair trade as alternatives for local development.

Gathering of statistical data and preparation of surveys.

Administrative registration activities, response to emails; as well as fill out case entry forms to the project, answer messages and calls.

Adaptation of spaces ceded by the Municipal GAD to adequately develop the workshops, painting, cleaning, decoration.

Support workshops and the textile area with the new clothes and the trading.

Support in workshops with the minors while their mothers carry out the textile making workshops or others of this project

Host situation

Host family

Programs

LT, STEPS, WW

SPECIAL NEEDS



“Equality does not mean giving everyone the same; it means giving everyone what they need”

There are people who struggle every day to “fit in” in a society that does not provide them with equal opportunities because of their different abilities.

Unfortunately, many societies are not structurally, socially or economically ready to adapt to their needs.

That is why projects focused on helping people in these conditions work every day to give them the opportunity to develop in order to reach their personal goals.



*If you want more details, contact us to schedule a meeting.

Camp Hope



Location

Quito - Pichincha

Type of project

Disabled/Education

Aims of the project

To create a safe space for disabled children, and to provide special therapy for them.

Activities

The project focuses on rehabilitation, and also provides medical services for the children as well as a house to live in. All of them are either orphans or their parents can't take care of them.

Community Context

Camp Hope is situated in the north of Quito (Carcelén). "Casa Hogar" is located in Carapungo (as well in the north).

Volunteer's requirements

The volunteer should have basic Spanish skills, a strong passion to help those in need. He should also be dedicated and respect the Christian beliefs (although he does not have to be Christian).

Volunteer's tasks

The volunteer will help the educators with activities including:
The children are separated into 5 groups depending on their skills. With the younger children, volunteers will change diapers, bring them to bed, help them eat, etc. With older children, volunteers are helping with arts and crafts and play games to practice reading and writing. Depending on the preference, s/he can also help with therapeutic tasks.

Host situation

Host family

Programs

LT, STEPS, WW, Funded Grenzenlos

SINAMUNE – Sistema Nacional de Música para Personas Especiales



Location

Quito – Pichincha

Type of project

Disabled children / music

Aims of the project

To give disabled youths the chance to improve their skills through music by taking part in an orchestra. There is a main orchestra that gives concerts once in a month and the “Orquesta inicial”, that consists of students learning to play an instrument. The institution also teaches them how to paint and dance. The students with fewer problems are trained in working inclusion/ basic Math and language.

Activities

The center teaches how to play different instruments. When the kids have developed some skills, they become part of the orchestra. Therefore, the kids practice for the orchestra concerts and presentations every day. Later, they have different classes. One day every week is gym class, where the whole school leaves to go to a pool and one day PE (Physical Education) class.

Community Context

SINAMUNE is located at the very north of Quito, in a district called Carcelén, a popular area full of little stores and restaurants. The steady group of working colleagues is about 25.

Volunteer’s requirements

It would be an advantage to already have some experience working with kids with special needs. Also, having musical knowledge will help the volunteer to have a stronger role in the organization. SINAMUNE is open for all those volunteers who are willing to share experiences with people that need a lot more attention than others. As a volunteer working in SINAMUNE patience and encouragement should be part of the character.

Volunteer’s tasks

The volunteer will help the educators with activities including: Depending on the skills of the volunteer, he/ she may be working in the orchestra and teach some of the children in music class (piano, clarinet, guitar or flute). The volunteer also supports the teachers in the different classes and activities the students perform. At the end of the day the volunteers have to accompany the students in the school bus that brings them home.

Host situation

Host family

Programs

LT, STEPS, WW, IJFD

Caritas de Esperanza



Location

Quito - Pichincha

Type of project

Elderly care

Aims of the project

The department of Caritas de Esperanza in charge of elderly adults aims to care for people over 65 years of age, who live in a state of vulnerability due to the lack of attention from local governments and their families. Likewise it helps those with active family members go to work while their elderly relative is being taken care of.

Activities

In this project, 60 older adults are cared for by a team of about 7 professionals who provide the following services:

- Psychological attention
- basic medical care
- Occupational and physical therapy
- Daily food
- Playful and recreational activities
- Transport service

Community Context

Caritas de Esperanza is located in Otavalo, a small town located 95 Km north of Quito in the province of Imbabura. Most of its population is of indigenous descent and proudly participate in celebrating their culture. Due to its location it enjoys a cool warm climate between 12 and 20 degrees Celsius.

The project is located in the community of La Esperanza de Azama where families have their plots where they sow for their own consumption and for trade. The main spoken languages are Spanish and Kichwa, although older members of the community may only know how to communicate in the latter.

Volunteer's requirements

Although not mandatory, it would be greatly appreciated if the volunteer fit into the following profiles:

- Doctor
- nurse
- psychologist
- Occupational therapist
- Assistant
- Student

Other than that the volunteer needs a basic level of spanish to communicate with the patients and the staff, empathy, patience, active listening, sensitivity, adaptability

The gender of the volunteer is not a problem, and there is no age limit as long as the volunteer is at least 18 years old

Caritas de Esperanza



Location

Quito - Pichincha

Type of project

Elderly care

Volunteer's tasks

The volunteer in this project fulfills important care roles according to their specialty or knowledge. When the volunteer does not have specialized technical knowledge, their functions are to support professionals, among the activities they will develop are the following:

They will develop activities that allow the elderly to be active, entertained and learn. They will create optimal spaces for help and motivation, reducing symptoms of passivity and improving the social life of the elderly.

Provide support in the food and hygiene service.

Accompany the elderly on the journey to the reception center.

Create didactic material together with the staff.

It should be noted that the volunteer is a participant in all cultural, recreational and sports activities that are generated during their participation.

Host situation Host family

Programs LT, STEPS, WW

Centro Médico Divino Niño



Location

Quito - Pichincha

Type of project

Health / social

Aims of the project

The objective of the medical center is to provide access to health care to low-income people so that they can be treated in time in case of any disease or illness. They receive a minimum of 2 people per day and a maximum of 20 people per day.

Activities

The day starts at 8 am until 4:30 pm. Patients may be infants, children, adults or older adults. And the medical specialties that are treated throughout the day are: General Medicine, Pediatrics, Obstetrics and Gynecology, Dentistry, Radiology, Psychology, Nutrition, Physical Therapy and clinical laboratory.

Community Context

Cotocollao is an urban parish in the north of Quito, close to the zones of Condado, Ponceano and La Concepción. It is a commercial area with many businesses and street vendors, which makes it easy to access and to get to other parts of the city as many buses cross the area. The population in the area tends to go from lower to middle class and are mostly of mixed race, meaning they will speak Spanish.

Volunteer's requirements

There are no gender specific requirements as long as the volunteers are older than 18 years old. It would be preferable to have someone with experience in the medical field, but if not, they must have an interest in learning about this topic and flexibility to adapt to different scenarios in the clinic. It is better if they have a basic knowledge of Spanish, for better development in the project.

It is essential that they should have social skills so that they can work with people of different ages.

Volunteer's tasks

The volunteer will help the educators with activities including:

Volunteers can provide assistance in different areas, depending on their profile. If they do not have previous experience in the medical area, they can also support in the social and administrative area until they learn about more specific tasks. Among the activities they can perform are:

- helping to serve food
- checking the vital signs (blood pressure, saturation, temperature, ...)
- measuring blood sugar
- pharmacy errands
- help the patients with washing and changing
- changing dressings
- cleaning / sterilizing medical equipment
- organizing and refilling medical supplies
- Supporting during medical campaigns in other cities (when they go to communities).

Host situation

Host family

Programs

LT, STEPS, WW

GENDER AND HUMAN RIGHTS



“Human rights are women's rights and women's rights are human rights”

-Hillary Clinton

There is a need to emphasize the protection and promotion of human rights.

To this day we hear daily cases of gender

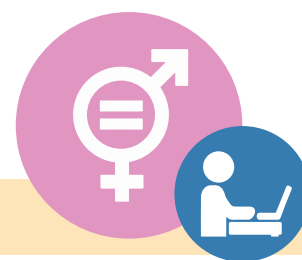
violence and violation of women's rights.

The protection that can be provided to women who need it is essential for their personal development both internally and externally.



*If you want more details, contact us to schedule a meeting.

CEPAM – Centro Ecuatoriano para la Promoción y Acción de la Mujer



Location

Quito – Pichincha

Type of project

Gender equality / administrative

Aims of the project

CEPAM aims to improve the social situation and quality of life of women, as well as contributing to the development of principles and policies which promote equal opportunities for women in the social, political, and economic spheres. CEPAM is a self-sustainable institution, specialized in defending the human rights of diverse women through the different stages of their lives.

Activities

Our services include: training activities in gender themes, prevention of violence, empowerment and employability; legal services; psychological services / crisis intervention; and social services. The working areas for volunteers are communication, marketing, fundraising and organizing images.

Community Context

Volunteers will work in the CEPAM office in the Center-North of Quito.

Volunteer's requirements

Volunteers should be interested in and adhere to principles of gender equality / social inclusion. Spanish proficiency is preferable. Both men and women are welcome. Preferable if volunteers have their own computers. One volunteer should have general computer, communication, marketing and social media skills. A second volunteer should ideally have experience in or have studied social sciences or politics, and be interested in themes of development and cooperation.

Volunteer's tasks

Depend on volunteer skills:

Share CEPAM's activities through social media

Help develop / update the webpage

Train CEPAM team members in use of social media

Design social media campaigns for: fundraising, volunteering, and for specific themes including gender violence, femicide, working with youth, 'masculinities' and commemoration of important dates

Create English content for websites.

Map out and create a database of potential ally non-profit organizations in other countries

Develop information, content and project profiles for potential donors

Assist CEPAM in developing new sources of cooperation

Eventually translate documents (Spanish/English)

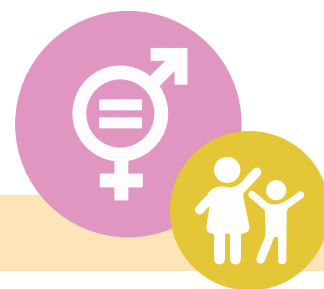
Host situation

Host family

Programs

LT, STEPS

Alas de Colibrí



Location

Quito - Pichincha

Type of project

Education, Children and Youth, Women

Aims of the project

"Alas de Colibrí" is an organization located in the north of Quito that seeks to abolish child labour and begging in the streets of Ecuador. The house is a home to young girls who were abused in their past (domestic violence, sexual abuse, child labor, human trafficking...). They stay in the house for 3 to 6 months, after which they may return to their families or are sent to other shelters. The aim is to provide psychological and educational support for the girls to help them regain confidence and ownership over their lives or to help them develop their future perspectives.

Activities

Within the home we accompany the girls in the educational field and organize different workshops (handicrafts, costume jewelry, gastronomy), promote sports and excursions to many different places. At the same time, Alas de Colibrí gives them legal support as they are underage.

Volunteer's requirements

Only female volunteers! The volunteer needs to be at least 18 years old and should have a basic knowledge of Spanish. Volunteers should be aware of the girls' situation and be motivated to participate in and independently take initiative in the daily activities. A volunteer with some level of experience in the psychological field would be an asset. Maturity is a must.

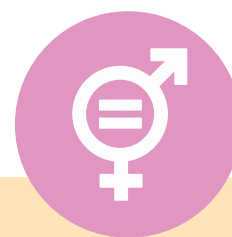
Volunteer's tasks

The volunteer will support and accompany the social worker and the psychologist in their daily work that includes being with the girls, helping with homework, preparing and promoting games/workshops, accompanying during excursions. The volunteer will work from Monday to Friday. Support during the weekend is sometimes needed, however she will then get two weekdays off.

Host situation Host family

Programs LT, STEPS, IJFD, WW

Casa de la Mujer – Adole Isis



Location

Quito – Pichincha

Type of project

Gender equality

Aims of the project

The project has two main aims:

1. It is a center for pregnant adolescents and mothers from 11 to 18 years old who have left their high-risk homes (violence, abuse, sexual abuse, etc.)

2. The Center works in schools on issues of violence prevention.

Activities

The project runs 365 days a year, 24 hours a day. The adolescents have daily routines ranging from personal hygiene and psychological follow-up, both individually and with family or groups, as well as school activities, etc.

Community Context

Volunteers work with adolescent girls, their children and families. They will live with a host family in Quito.

Volunteer's requirements

Volunteers should be female aged 19–25 years old with basic proficiency in the Spanish language. They should have an interest in working with at-risk youth, and have the strength and desire to work with some difficult cases. The volunteer is expected to comply with and adapt to the standards, rules, and routines of the center.

Volunteer's tasks

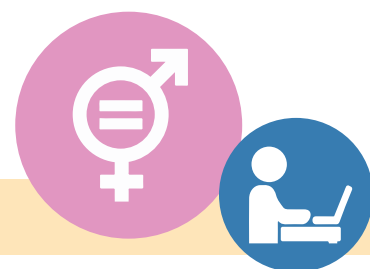
Help with the daily activities (educational, medical and recreational) of the adolescents.

Host situation Host family

Programs LT, STEPS, IJFD, WW



Mujeres sin fronteras



Location

Ibarra - Imbabura.

Type of project

Human rights, women's rights / ADM AND COM

Aims of the project

The aim of the project is to help women who have escaped from vulnerable situations get back on their feet by finding community, a sense of belonging and starting their own businesses.

Activities

The project has many activities and consists of a permanent staff of about 20-30 people. They focus on offering workshops by and for women, visiting the nearby communities and helping the people who are in need, and giving small talks about human rights.

Community Context

Ibarra is a city located in the province of Imbabura, it has a diverse population with mostly mixed race people but also afro Ecuadorian communities and indigenous communities nearby. It is located 3 hours from Quito.

Volunteer's requirements

The volunteers should be open minded, creative, empathetic individuals who want to help and are also proactive as there are many activities to partake in.

Volunteer's tasks

The volunteer can participate in a variety of tasks such as:

Supporting the staff in any way

Helping to visit the nearby communities and teach about the importance of women's rights

Planning and helping with the preparation of the workshops

Helping with social media and communication for the organization

Timetable: Monday to Friday 7:30am - 1:30pm

Host situation

Host family

Programs

LT, STEPS, WW



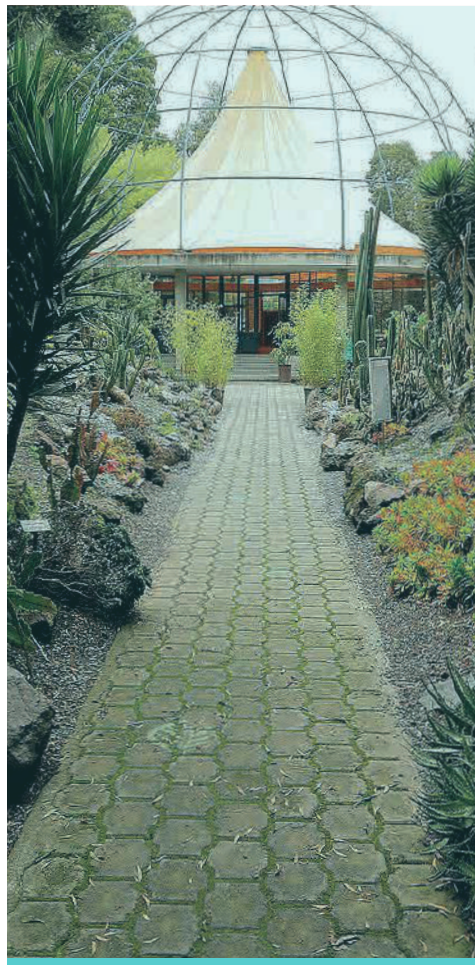
ENVIRONMENT



“The Earth is what we all have in common”

Working on projects that promote the care of the environment and nature is choosing to help and work surrounded by life.

It is very important to invest time in caring for the environment and to create spaces that promote these initiatives in society



*If you want more details, contact us to schedule a meeting.

AmaZoonico



Location

Tena - Napo

Type of project

Environment and animals

Aims of the project

AmaZOOnico has become one of the biggest animal rescue centers in Ecuador. One of amaZOOnico's strengths is that the team is made of a mix of the traditional knowledge and wisdom of local people and a vast array of perspectives and experiences brought by people coming from all around the world.

Activities

They rehabilitate and reintroduce wild animals, who were victims of illegal trafficking, back into their natural habitats, to take care of those who can't be released, and carry out educational activities with visitors.

Community Context

The project has 5 hectares where they work. To get there it is necessary to take a bus that takes 1 hour and a half, then the volunteers take a canoe that takes another 10 minutes to get to AmaZoonico.

Volunteer's requirements

- Responsibility
 - Positive attitude (hard work)
 - Willingness to live with several people
- No professional training in animal care required

Volunteer's tasks

- Animal Feeding
- Enrichment for animals
- They can participate in the treatment of animals as well
- Animal lovers have different tasks, in conservation projects
- Guiding visitors through the center

Host situation

Living at the project (extra cost)

Programs

ICYE Long Term and Steps

Jardín Botánico de Cuenca



Location

Cuenca - Azuay

Type of project

Environment

Aims of the project

The main objectives are conservation, environmental education and research; On average, around 2000 visitors are received monthly. The project maintains 7 permanent staff members to maintain green areas but lacks environmental guides for guided tours.

Activities

The project has permanent staff that takes care of the plants and installations, they also offer nature conservation and education events for schools and children to raise awareness.

Community Context

Cuenca is one of the most beautiful cities in the country, and is split by four rivers, colonial style streets, european style architecture, churches and cathedrals, incan ruins and cultural markets and buildings filled with art and handicrafts

Volunteer's requirements

The volunteers should be proactive, as they will be in charge of their own personal project. Basic Spanish skills are helpful but not necessary.

Volunteer's tasks

The volunteers will develop a personal project which they will propose, as well as taking care of activities assigned to them such as: visitor management, guided tours, nocturnal events, biocommerce markets, agricultural work, upkeep and cleaning of installations, working in the entomology laboratory taking care of the collection and plastering of insects.

Host situation

Host family

Programs

LT, STEPS, Funded Grenzenlos

Jardín Botánico de Quito

Fundación Botánica de los Andes



Location

Quito - Pichincha

Type of project

Environment / flora rescue

Aims of the project

The Jardín botánico de Quito is an entity whose main mission is to conserve and educate about the Andean flora, through the exhibition of plants, the most regular or common activities are the maintenance of the collections and green spaces.

Activities

The project is responsible for taking actions to consolidate a culture of respect for the natural environment in the Andean Region, contributing to the defense and protection of the environment through scientific research for the Andean flora.

Community Context

El Jardín is located in the center of the city, inside Carolina Park. It is one of the areas with the easiest access to restaurants, hospitals, transportation and facilities. We understand that the volunteer will be staying with a host family, however, mobiliza-

Volunteer's requirements

In general, because of the type of work, volunteers from 19 to 27 years of age are required. They must be in good health and, above all, be willing to get dirty and do outdoor activities.

Volunteer's tasks

The volunteer will mainly participate in the maintenance of collections of orchids, carnivorous plants, cacti, succulents, tropical plants and native plants. He/she will be responsible for planting, reseedling, propagation, watering, cleaning, pruning, fertilization. Your role will be to assist and learn about these processes, getting to know the species and acquiring long-term skills.

Host situation Host family

Programs LT, STEPS, WW



Location

Cuenca – Azuay.

Type of project

Environmental Protection

Aims of the project

To develop projects or initiatives that conserve and protect ecosystems and wildlife habitat, through initiatives that involve people and wildlife.

To contribute to the protection of the environment, promoting knowledge and awareness of biodiversity through the creation of unforgettable experiences, the implementation of scientific research programs, education, management and breeding of fauna and flora applied to the conservation of animal and plant species, ecosystems and native ethnic groups of Ecuador.

Activities

Volunteers rotate through different areas such as:

- Animal welfare:
- Preparation of diets in the nutrition department.
- Fauna care: feeding and cleaning of the enclosures of the housed fauna.
- Reforestation with native flora within the biopark grounds.
- Biotherium laboratory: reproduction of bugs.
- Adequacy: improvement of enclosures, cleaning, construction of areas for the species.
- Administrative:
- Files, data, reports, research papers, information for the museum.
- Projects:
- Educational projects: educational guides, support in vacation colonies or educational talks.
- Bioprojects: compost, fertilizer, nursery.

Community Context

The project works in a rural area of the city of Cuenca, which allows them to work with a group of experts in animal care. In addition, they also work on education projects in nearby communities to raise awareness of the importance of caring for animals and nature.

Volunteer's requirements

These are the basics for volunteer profiles, regardless of gender:

- Computing
- Organization
- Intermediate level of Spanish
- Teamwork
- Honesty
- Respect
- Good interpersonal skills with the team and other volunteers
- Order and personal cleanliness
- Passion for wildlife and nature
- Interest in sharing and learning from other cultures
- Enjoyment of outdoor activities

Fundación AMARU



Location

Cuenca - Azuay.

Type of project

Environmental Protection

Volunteer's tasks

Fauna care: feeding and cleaning of the enclosures of the housed fauna.

Reforestation with native flora within the biopark grounds.

Biotherium laboratory: reproduction of bugs.

Adequacy: improvement of enclosures, cleaning, construction of areas for the species.

Administrative work.

Educational guides, support in vacation colonies or educational talks.

Make compost, fertilizer, and nursery.

Volunteers live inside the project, and they have shared spaces (kitchen, living room), they have to prepare their own food so it helps to develop their independence and responsibility.

Host situation

Living at the project (extra cost)

Programs

LT, STEPS

ADMINISTRATION AND COMMUNICATIONS



Volunteers who feel better working in communication and administrative areas can work on the CEPAM and Faire Collection projects.

volunteers will be indicated in advance to the projects.

They can also work in VASE and become part of the team!

The preference of the



*If you want more details, contact us to schedule a meeting.

Fundación VASE – ICYE Ecuador



Location

Quito – Pichincha

Type of project

Administrative

Aims of the project

Fundación VASE-ICYE Ecuador is a non-profit, non-governmental organization dedicated to improving the social situation in Ecuador through volunteering.

Activities

The office is located in downtown Quito.

Volunteer's requirements

They need to have a good level of English and basic knowledge of Spanish and PC literacy (Word, Excel, Access), be diligent and reliable in their work, and be willing to work overtime in peak seasons. Creativity and interest in international work are needed – your ideas will always be welcome!

Volunteer's tasks

There is a lot of flexibility based on the volunteer's desires and interests. They will most likely work with the short-term program and seminars (orientation, midterm, final camp) and monitoring (project and family visits) for long term volunteers. Depending on the volunteer's interests there is also work to do on VASE's social media and internet representation.

Host situation Host family

Programs LT, STEPS, WW, IJFD, Funded Grenzenlos





ECUADOR IS WAITING FOR YOU

For more information



incoming@volunteervase.org



(+593) 99 270 2119



www.volunteervase.org



Av. Shyris y Suecia. Edificio Argentum.
Office 906. Quito-Ecuador.



@icye_ecuador



@icye.ecuador



@voluntariadovase.ec

