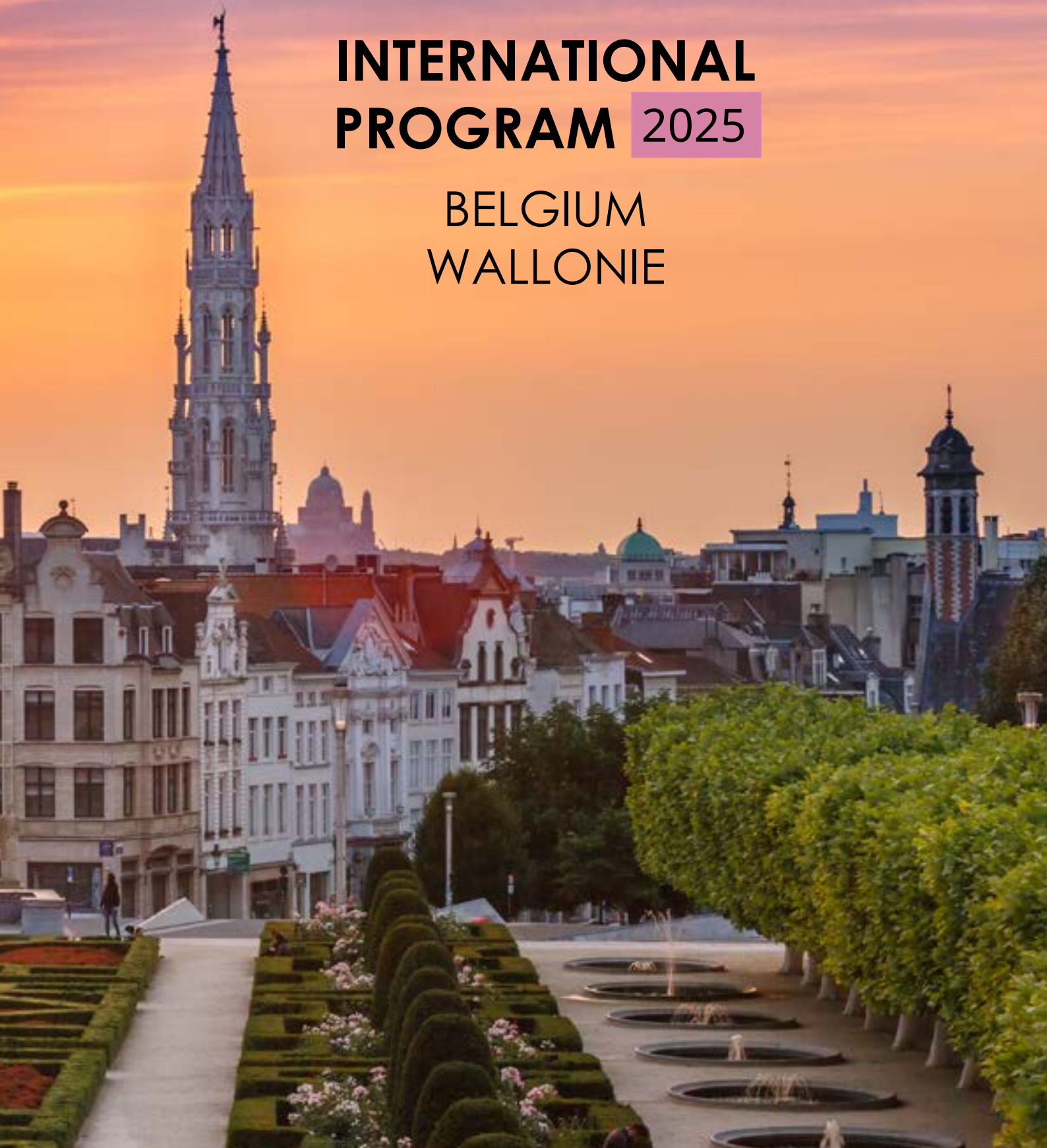


INTERNATIONAL PROGRAM 2025

BELGIUM
WALLONIE



ABOUT THE SVI



ABOUT THE SVI

The «Service Volontaire International» (SVI) is a non-profit, non-religious, non-political association founded and run by volunteers, with origins in France, Belgium, and Vietnam. SVI has received official recognition as a youth organization from the Belgian Ministry of Youth and is accredited by the European Commission to facilitate and coordinate Erasmus+ and European Voluntary Service (EVS) programs.

SVI actively participates in international exchange programs in over 80 countries, including Belgium.

Our primary focus is to prepare, deploy, and host volunteers who aspire to participate in international projects or work camps organized by local nonprofit associations.



Background

The SVI was founded in 2009 by former volunteers and aid workers. SVI is the Belgian independent branch of the Vietnamese NGO SJ Vietnam, which was established in 2004 in Hanoi with the support of both United Nations Volunteers and the Belgian Development Cooperation. Pierre De Hanscutter, co-founder of SJ Vietnam and founder of SVI, was working within these organizations at the time. In 2013, the French branch of our organization was established by former volunteers.

Our main activities

SVI is actively engaged in international exchanges with both the North and South. Its primary objective is to prepare, send, and welcome young volunteers within the framework of international projects organized by local nonprofit associations.

Our public

We are a youth organization, primarily targeting individuals between 18 and 35 years old. However, many of our European partners offer volunteering opportunities from the age of 16. Our offerings include individual projects as well as group experiences, accommodating youth movements, school groups, and families.

Our mission is to make volunteering accessible to everyone. That's why we collaborate extensively with Erasmus+ and the European Solidarity Corps to reach a broader audience, especially aiming to provide young people with limited financial, social, or cultural resources the chance to participate in this enriching experience. Through these efforts, we aspire to contribute to the development of responsible, critical, and supportive citizens.

Every year, nearly 1,000 young Belgians engage in volunteering projects, and approximately a hundred volunteers from around the world come to Belgium to share in this unique experience.

Missions and values

The organization primarily focuses on fostering intercultural exchanges among young people aged 16 to 30 worldwide, providing them with opportunities to participate in volunteering projects regardless of their age, gender, or skills. In essence, SVI's main objective is to make international volunteering accessible to a wide range of young individuals. Through these efforts, SVI aims to inspire young people to actively engage with and contribute to the societies they are part of, empowering them to become ethically and socially conscious global citizens who are critical and empathetic. Consequently, SVI promotes not only solidarity but also active citizenship. The ultimate goal of SVI is to raise awareness among young people about the challenges of our globalized society and help them comprehend the significance of solidarity, diversity, and development within such a society.

SVI firmly believes that young people should be the primary beneficiaries of opportunities like international volunteering, as they represent the future and will play a pivotal role in shaping tomorrow's society. SVI also holds the conviction that volunteering should not be a means to profit but rather a way to support local associations, enhance one's ability to adapt to foreign cultures, step out of one's comfort zone, and gain insights into both others and oneself. Furthermore, SVI believes that everyone can contribute to a project, regardless of whether they come from the North or the South, and that cultural exchanges can occur in both directions, fostering mutual learning and understanding.

What does volunteer mean for us?

First, voluntary work should be distinguished from humanitarian work. Volunteers sent to international work camps typically do not require specific skills other than their motivation (and sometimes a basic knowledge of English, as it is the primary language spoken in most work camps). Humanitarian actions, on the other hand, are carried out by professionals such as doctors or teachers in crisis situations.

Secondly, SVI actively opposes what is often referred to as «humanitarian tourism» or «voluntourism.» SVI firmly believes that volunteering and tourism are distinct activities. Voluntourism is a form of alternative tourism that combines tourism with volunteering in developing countries. People engage in voluntourism by going on holiday and simultaneously volunteering for a charitable cause during their stay, usually at a significant cost

to the local community. SVI finds this morally unacceptable, as it often fails to provide financial support to local host organizations. Additionally, companies in this sector sometimes pose as nonprofit associations and organize voluntary projects based on their clients' desires, without considering the actual needs of local communities.

Thirdly, from SVI's perspective, volunteering is not about «saving» the Third World or imposing one's culture on less fortunate countries. It is not a mere vacation; rather, it is about providing both financial and human support to local organizations and communities. Volunteering is not primarily about enhancing one's CV, although it can be a valuable asset for one's future professional life. It represents a personal commitment that involves learning and adapting to another culture, language, and country, as well as embracing different customs and perspectives. This experience ultimately fosters the development of critical thinking and open-mindedness. It is an opportunity for individuals to actively engage and contribute to positive change. Engaging in international volunteering involves

sharing one's knowledge, skills, and experiences, while also cultivating qualities such as responsibility and organization. It fosters the development of trust and respect for others. International volunteering encourages individuals to question what they can learn from people, cultures, and countries different from their own. This process promotes mutual understanding and learning. Consequently, through volunteering, one can undergo a transformative journey, gaining a deeper understanding of oneself and the world we inhabit. In summary, volunteering is not solely about a «project»; it also entails learning to coexist with individuals who possess different habits and lifestyles.

Team organization

Since the establishment of SVI, Pierre De Hanscutter had been the sole full-time member for several years. However, in April 2015, two additional staff members were hired to support him in ensuring the smooth operation of SVI. Currently, the team of SVI is composed of nine workers at the Belgian office, including the director. In addition to the team, trainees and volunteers are brought on board each year, aligning with SVI's philosophy: its activities should be led by and for young people, granting them the opportunity to contribute to success, regardless of their backgrounds, beliefs, or gender.

SVI comprises several distinct departments, with each team member, whether working full-time or part-time, playing a crucial role within the organization and working toward common objectives. The various departments include coordination (overseeing outgoing volunteers and groups heading to Asia, Africa, Europe, North and South America, and Oceania. As well as incoming volunteers and groups coming to Belgium); communication (both external and internal); human resources; administrative services; legal services; accounting; translation; partnerships (with nonprofit and for-profit organizations); education and training sessions; IT; community outreach; funding; and EU affairs.



SERVICE VOLONTAIRE INTERNATIONAL BELGIUM

Our team



De Hanscutter Pierre

founder & director



Daria Proskouryakova

coordinator of the language projects
coordinator of African projects



Noémi Galdos

coordinator of American & Latin American Projects
coordinator of Incoming Projects
coordinator of ESC & Erasmus+



Alena Verbitskaya

coordinator of Asia Projects
coordinator of Europe Projects
coordinator of Costa Rica projects



Muriel Germain

office manager



Camille Vellande

office assistant



Elena Churikova

graphic designer



Ayoub Aknin

IT specialist

ABOUT OUR BELGIAN PROJECTS

Volunteers interested in taking part in a project in Belgium will have the option to select from short-term or long-term projects.

Our local partners, who have pledged their commitment to SVI, are dedicated to welcoming young individuals from across the globe to our projects. We conduct regular meetings with these partners to enhance awareness and provide information to the teams responsible for hosting volunteers, ensuring they are well prepared for the challenges and obstacles that may arise during the course of the project.



GROS
BISOUS



MERCI

ABOUT OUR BELGIAN PROJECTS

How to apply for a project in Belgium?

1- One of the volunteers would like to participate in a volunteering project offered by SVI: what steps should they take?

At SVI, we firmly believe that volunteering should be a well-prepared experience. Therefore, it is crucial that any young person interested in participating in such an endeavor goes through a sending association.

Sending associations play a vital role in supporting volunteers. The coordinators within these associations assist young individuals in selecting the right project and are at the forefront of preparing them for this experience.

On the other hand, SVI assumes the role of a coordinating association. We act as the bridge between the sending association, the volunteer, and our local partners. We ensure that our local partners align with our philosophy regarding the hosting of volunteers and serve as the primary point of contact in case of issues, facilitating communication among all parties.

We strongly recommend beginning this process at least two months in advance to allow for all necessary preparations, including preparations for departure within the sending association, as well as handling administrative formalities before arrival (such as insurance, passports, visas, etc.). SVI also provides support for visa applications and issues invitation letters when necessary.

Therefore, prospective volunteers must go through their respective sending associations. Our coordinator for projects in Belgium will then send an application form that can be completed by the volunteer.

2- What skills will he/she need to demonstrate in order to gain access?

Volunteering involves participating in a project where motivation is the primary criterion. We are not engaged in humanitarian projects that demand specific expertise; instead, we encourage voluntary participation with the objective of contributing to a project and fostering cross-cultural encounters.

That's why, in the application form, we request that volunteers provide a clear explanation of their motivations

3- How long will he/she have to wait after sending the application?

Our policy is to request a response from our partners within 10 days of us sending the application. If the partner does not reply within this timeframe, we invite the volunteer to consider selecting another project. Additionally, we consistently emphasize the importance of a prompt response to our partners, stressing the need to accommodate the needs and expectations of young people.

4- What are the steps to follow sending this form?

When we receive a positive response from our partner, we arrange a video call involving the volunteer, the partner, and our incoming coordinator.

The purpose of this video call is to clarify the project details, discuss each party's expectations, and assess whether it is a suitable match for everyone involved.

The final decision will not be made during this video call; instead, both the partner and the volunteer will communicate it a few days later.

If both parties confirm their commitment to the project, we can then proceed with the confirmation procedures.

It is important to note that booking a plane ticket should not occur until after the confirmation has been received following the video call.

5- The project is confirmed: what comes next?

Once confirmed, SVI will send a series of documents to be completed by both the volunteer and the host association.

The volunteer may be required to provide SVI with these documents:

- Confirmation of flight tickets.
- Copy of passport and visa.
- Proof of insurance coverage.
- Certificate of good conduct.
- Certificate of good health.

All of these documents must be submitted prior to the volunteer's arrival at the project.

Our short-term projects

In Belgium, volunteers have the opportunity to participate in various well-known festivals, including music festivals, street art festivals, and fantasy film festivals. For these work camps, we are seeking 5 to 10 volunteers, depending on the demand from our partners. These volunteers will play a key role in festival activities, such as assembly and dismantling, waste management, ticket distribution, and more. In return for their contributions, they will have the chance to enjoy the festival.

It is important to note that this is not a free ticket to attend the festival but an opportunity to actively engage in a meaningful project. Volunteers should expect to take on responsibilities as assigned.

At SVI, we value diversity in all its forms, including gender equality and cultural diversity. We believe that such projects promote intercultural exchange, and therefore, we strive to ensure that volunteers on the same project come from as many nationalities as possible.

Each group of volunteers will have a designated meeting point predetermined by the project coordinator or a team leader. This team leader actively participates in the pre-arranged Skype sessions and plays a crucial role in facilitating communication throughout the project.

Preparations are made ahead of the project to enable volunteers to establish communication channels with each other and with the team leader. These channels may include social networks, WhatsApp, and other means of communication.

The team leader will actively participate in the project as a fellow volunteer while also assuming the role of ensuring a harmonious group dynamic and providing guidance on project activities. Additionally, the team leader will serve as the liaison between the group and the incoming coordinator, facilitating the prompt relay of any challenges or issues that may arise

Our long-term projects

Upon arrival, each volunteer will receive a warm welcome from either an SVI member, who will accompany them to their volunteering project, or a representative of the local association. In cases where the incoming project coordinator cannot be present upon arrival, a meeting will be scheduled in the following days for the volunteer to meet with them.

Our partners are committed to providing the best possible welcome to our volunteers, ensuring they are in an optimal environment to commence their projects.

For volunteers planning to stay in Belgium for more than a month, participation in one of our required preparation weekends is mandatory. These weekends provide an excellent opportunity to familiarize themselves with the SVI team and connect with young Belgians who are also embarking on their volunteering journey.

Furthermore, we regularly extend invitations to our international volunteers to engage in various aspects of SVI association life, including our dinners, social gatherings with local youth, and events organized by SVI volunteers.

Volunteers are an integral part of our association, and they are encouraged to actively participate in all our activities.

Important things to know

1- Visa

European citizens only require a national identity card or a passport for entry into Belgium.

Non-European citizens may need a visa. The visa application must be submitted to the embassy or Belgian consulate in your country of residence.

If your country of residence does not have an embassy or Belgian consulate, please get in touch with the nearest Belgian Embassy, typically located in a neighboring country.

The visa application process can occasionally be time-consuming. Therefore, it is advisable to apply for a visa at least four weeks before your planned departure. Visa info: <https://diplomatie.belgium.be/fr/venir-en-belgique/visa-pour-la-belgique>

To issue a letter of invitation, we require the following information:

- Last name.
- First name.
- Date and place of birth.
- Address.
- Passport number, including date of issuance and expiration
- Nationality.
- Project start and end dates.

Volunteers can get extra info at

<https://diplomatie.belgium.be/fr/conseils-aux-voyageurs>

2- Health

You need health insurance to cover your entire trip to Belgium (typically, the host has insurance to cover your work-related activities). Your sending association may assist you in finding suitable insurance. While no vaccines are required, if you plan to engage in physical work, we recommend getting vaccinated against tetanus and hepatitis. It's essential to visit your dentist before leaving home.

Ensure that you bring all the necessary medications with you, as it can be complicated to purchase them in Belgium without the required documentation. Additionally, the medication you need may have a different name in Belgium compared to your home country.

European volunteers should ensure their European Health Insurance Card is up to date, and it can be obtained for free!

3- How to prepare your luggage

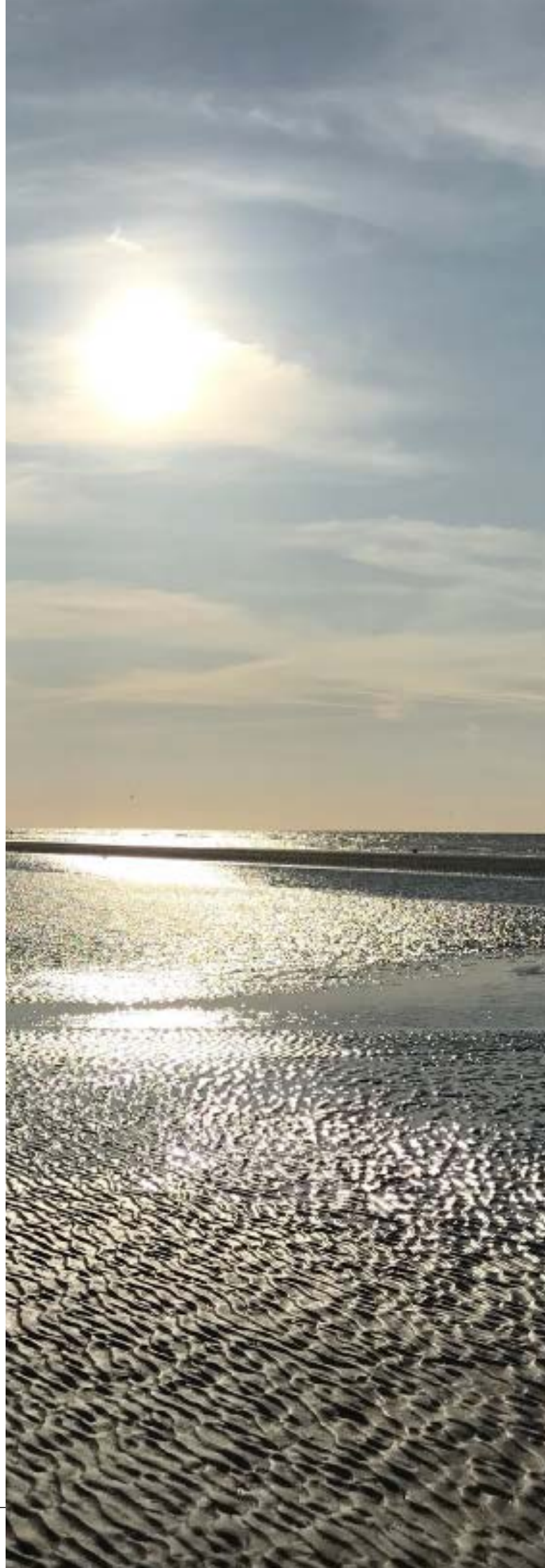
It is essential that you pack all your belongings in a backpack rather than any other type of suitcase, as it can become very uncomfortable to transport after a long journey.

Belgium's geographical location gives it a typical temperate oceanic climate, which, of course, contributes to its reputation as a rainy country. However, let's not exaggerate! Generally speaking, there are no significant temperature variations between the South and the North of Belgium. That being said, the southern part may experience slightly colder winters (so don't forget your mittens for the entire country), while the northern part, particularly along the coast, can be a bit warmer during the summer. In fact, during the summer, you can even take a dip in the North Sea, so remember to bring your swimsuit along.

You would better not forget some useful things when you are thinking about traveling to Belgium:

- Sleeping bag, bedsheet, pillow, and mat (if specified in your project's information sheet), as well as towels.
- A TENT (if specified in your project's information sheet).
- Sunscreen and a hat
- Clothing and footwear suitable for varying weather conditions (even in summer) and outdoor activities.
- Your mobile phone (if you plan to stay for an extended period, it's convenient to purchase a Belgian SIM card)
- Personal items representing your home country
- (Posters, music, postcards, maps, videos, and food) and things from your family°
- Pocket money
- If possible, pack only ONE bag to maximize space in your dormitory; backpacks are highly recommended!

To find affordable flight tickets, we have compiled a list of budget-friendly airline companies. You can access this list at <https://travel.servicevolontaire.org>



ABOUT BELGIUM

While Belgium may be small, it holds a significant place on the international stage and consistently ranks among the world's top places to live. The multicultural diversity of Belgium lends its capital, Brussels, a vibrant atmosphere, with a wide range of global services and amenities available to ease the transition for even the newest expatriates.

At first glance, Belgium boasts numerous top attractions. It is the headquarters of the European Union (EU), situated within a short distance of several international capitals, and is home to three official languages (French, Dutch, and German), along with a substantial international community. Beyond its global presence, Belgium is renowned for its delectable fries, iconic character Tintin, exquisite chocolates, and a rich variety of beers. For expatriates eager to embrace Belgian culture, relocating to Belgium promises a plethora of new experiences.

Belgium is renowned as one of the finest places to live

Belgium has something for everyone. If you are a fan of the beach and cycling, the allure of our coastline will be irresistible!

Our historic cities, renowned for their art and culture, will captivate you, whether you have a penchant for history, architecture, or culture. Belgians are true connoisseurs of gastronomy, and they take great pleasure in sharing their culinary delights, including beer, cheese, chocolate, pralines, chicons, Flemish carbonades, speculoos, and, of course, our famous French fries.

Moreover, Belgium is a hub of entertainment: our cultural scene is vibrant, offering a plethora of exhibitions, concerts, festivals, theatre performances, and dance shows. Moreover, when the night falls, the festive spirit comes alive

Cost of living

The healthcare system in Belgium is of exceptional quality, known for its high standard of medical care.

Medical care is readily accessible, and supported by extensive university hospitals. Additionally, it is often more cost-effective compared to the United States. Belgium's shorter waiting times have made it a prime destination for medical tourism.

Furthermore, the cost of living is relatively affordable. Brussels, a favored destination for numerous expats, offers lower living costs compared to other Western European capitals like London, Copenhagen, Vienna, and Zurich, as highlighted by Mercer's Cost of Living rankings.

The cost of living in Brussels is **24% cheaper** than in Paris.

The cost of living in Brussels is **21% cheaper** than in Amsterdam.

The cost of living in Brussels is **26% cheaper** than in Washington.

The cost of living in Brussels is **33% cheaper** than in Sydney.

The cost of living in Brussels is **46% more expensive** than in Prague.

The cost of living in Brussels is **148% more expensive** than in Buenos Aires.

The cost of living in Brussels is **78% more expensive** than in Mexico City.

The cost of living in Brussels is **12% more expensive** than in Charlottesville, Virginia.

The cost of living in Brussels is **5% more expensive** than in Madrid.

In addition to this, Belgium features an efficient public transportation system with a seamlessly integrated network of buses, metros, and trams. This system makes it convenient to embark on weekend getaways within Belgium (some weekend destinations even offer a 50 percent discount) or to easily visit neighboring countries.

Public Transportation Costs in Belgium

Most Belgian cities are well connected by public transport. In major cities, a transport pass for the month costs around €35–€50. These passes can be used on every mode of public transportation. A single fare usually costs around €2–€4.

Taxi rates start at around €4 in Brussels. In general, to buy a 1 km taxi ride in Belgium it costs two. As this is an average, it can go as low as 1.66 € and as high as

2.78 € depending on the time of year. This price for one km in TAXI is higher than the cost in France (by 15%). In other major cities, the starting rate varies but the rate per kilometer is generally in the same range.

The journey between Zaventem airport and the center of Brussels costs around 45 euros. However, we encourage you to take the train and public transport.

Dining Out Costs in Belgium

Belgium, particularly its capital city of Brussels, is renowned for its culinary excellence. Brussels has earned comparisons with cities like New York, Hong Kong, and Paris due to its exceptional dining experiences, offering a wide range of high-quality cuisine. However, it's important to note that fine dining in Brussels can be relatively expensive. Nonetheless, there are plenty of more affordable options available, ensuring that food enthusiasts can indulge without restrictions. Budget-friendly meals for one person typically cost between €10 and €15, while a half-liter of commercial beer is priced at approximately €4.

Emergency

Take note of these essential emergency numbers in case you find yourself in a crisis in Belgium, along with a list of Belgian helplines for support and information.

For residents in Belgium, it's crucial to familiarize themselves with Belgium's emergency numbers in advance. Belgium provides a variety of important emergency numbers and helpful helplines, depending on the nature of the emergency or crisis. Below is a list of the most critical Belgian emergency numbers to keep handy.

Additionally, here are emergency phrases and medical terms in both French and Dutch:

- **Accident:** Accident / Ongeluk.
- **Emergency:** Urgence / Spoedgeval.
- **Ambulance:** Ambulance / Ziekenwagen.
- **Doctor:** Médecin / Doctor.
- **Police:** Police / Politie
- **Very sick:** Très malade / Heel ziek.

- **I need an ambulance:** J'ai besoin d'une ambulance / Ik heb een ziekenwagen nodig.
- **I need a doctor:** Il me faut un médecin / Ik heb een doctor nodig.
- **I need the police:** J'ai besoin de la police / Ik heb de politie nodig.

Emergency phone number

Call: 112

This emergency number is accessible free of charge throughout the European Union (EU), as well as in select other countries like Israel, Norway, and Russia. It should only be dialed in genuine emergency situations. You can also use 112 to report serious accidents, instances where someone needs to be extricated from a vehicle, situations involving dangerous large animals like horses or snakes, or to request assistance in clearing roads following a storm. One distinctive advantage of the 112 number is that it can be dialed from any type of telephone, including mobile phones without a SIM card.

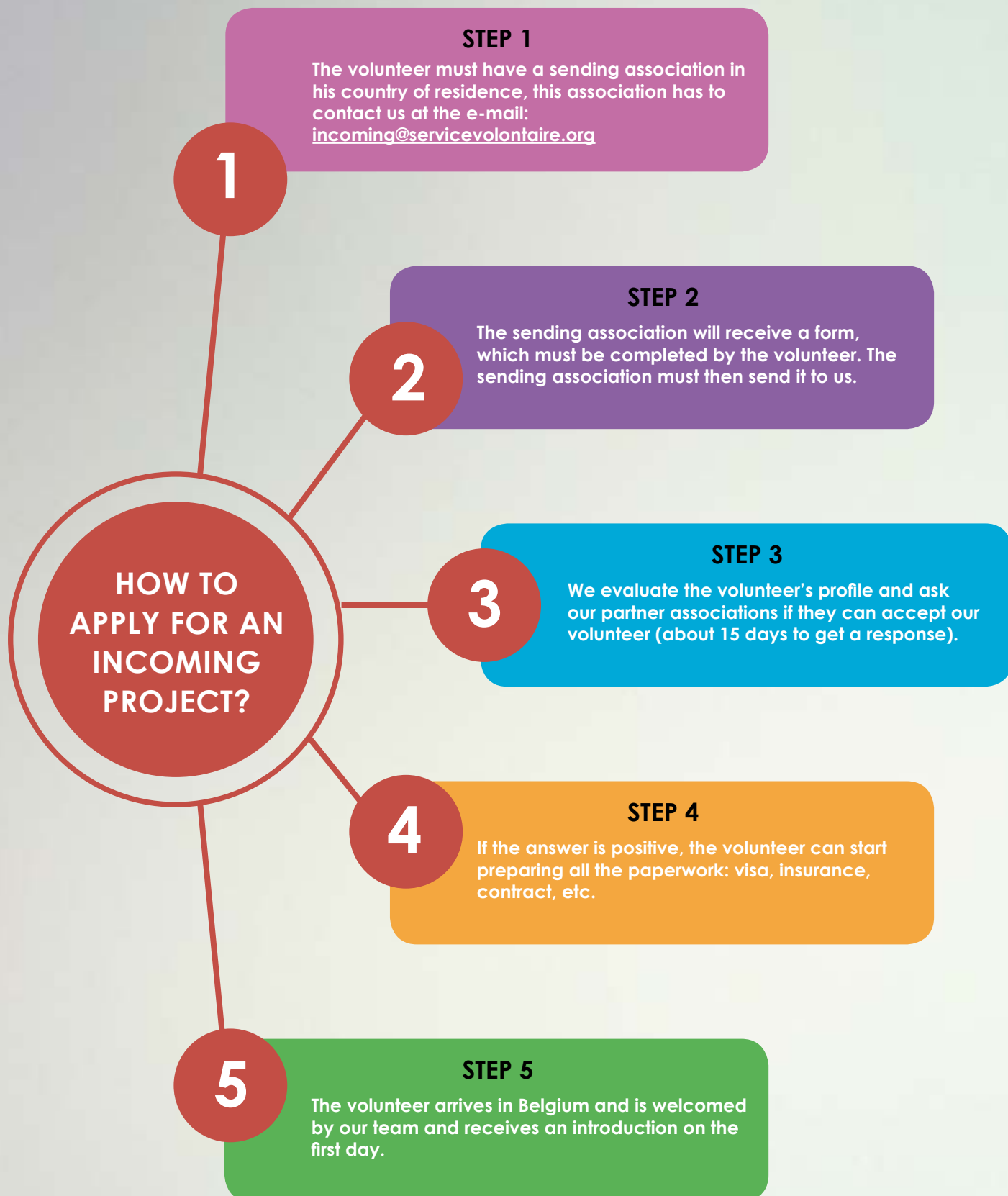
Operators in Belgium are typically fluent in English, French, Dutch, and occasionally German. When calling, be prepared to provide precise details about the location, address, and information regarding the accident and any injured individuals. Do not disconnect the call until you have received assistance.

Phone numbers commencing with **0800** are also toll-free.

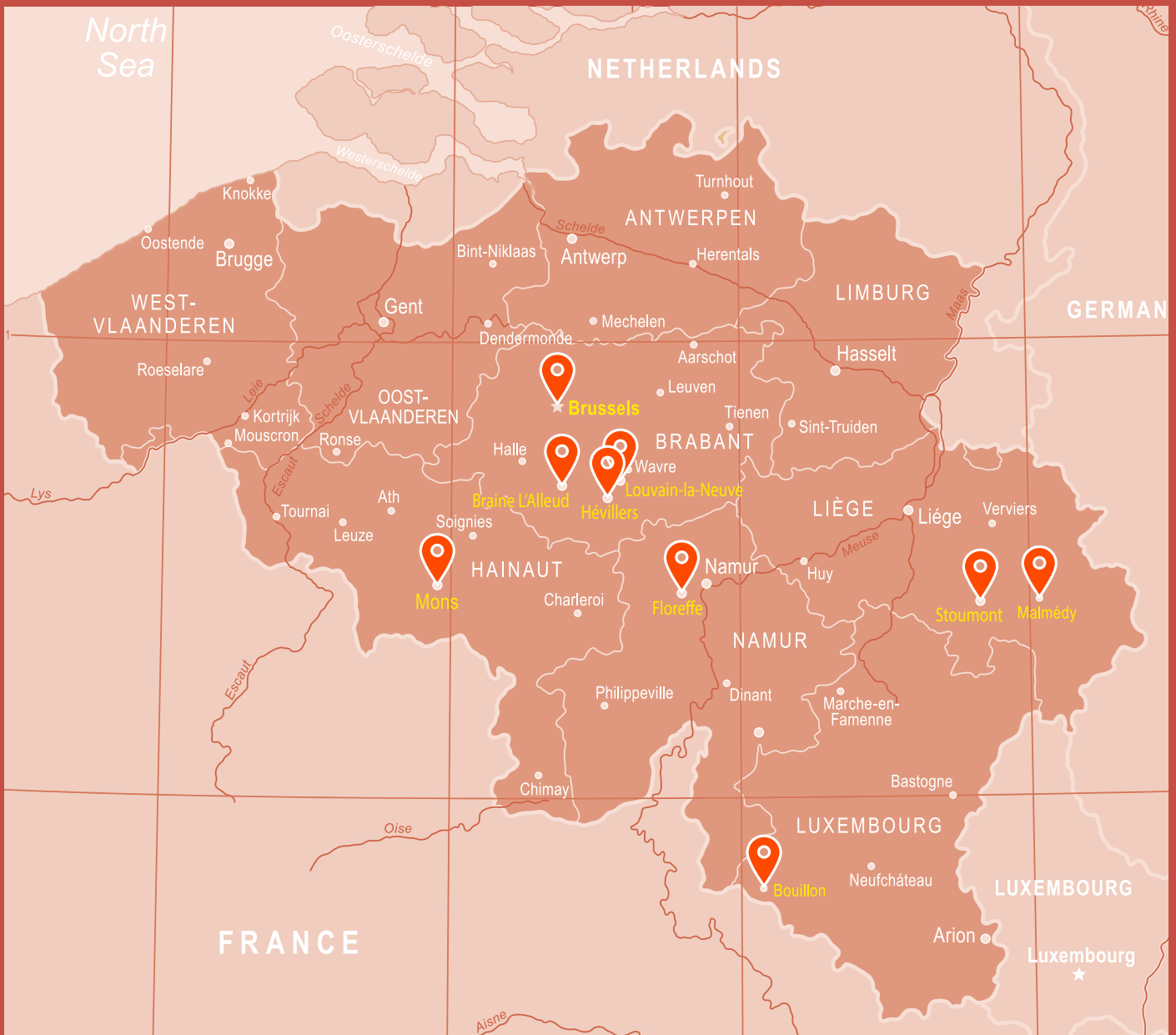
Lost or Stolen Belgian IDs, Passports, and Residence Permits

To report lost or stolen documents, contact the government service **DocStop at | Call 00800 2123.**

2123 | Available 24/7



SUMMARY OF THE INTERNATIONAL PROJECTS IN BELGIUM



Code	Name	Place	Dates	Type	N° Vols	Age limit	Remarks
SVI_ ESPERANZAH_ 2024	Esperanzah Festival	Floreffe	Dates Summer Months	ENVI – FEST	5	18+	Motivation Letter. Project with teamleader
22-25	Côte à Côte	Louvain-La-Neuve	Permanent project	EDU – FEST CULT – ART	1	18+	Motivation Letter
SVI-AJJB25	Auberge de jeunesse Jacques Brel	Brussels	Permanent project	ENV– CULT LEAD	2	18+	Motivation Letter
BE-SVI-fagotin	Le Fagotin	Stoumont	Permanent project	ENVI – EDU ANI	2	18+	Motivation Letter
SVI_REN_2022	Renaissance	Braine L'Alleud	Permanent project	SOCI – DISA EDU	2	18+	Motivation Letter
SVI-BAUTO-EXT	Auberge de jeunesse de Bouillon	Bouillon (Province du Luxembourg)	Permanent project. From March to September	EDU – SOCI MANU	2	20+	Motivation Letter
SVI-B	Auberge de jeunesse Malmedy	Malmedy (Province de Liège)	Permanent project. From March to October	EDU – SOCI MANU	1	18+	Motivation Letter
SVI_ KALEO_2024	Kaleo	Ardennes	Permanent project	EDU – SOCI CULT	2	18+	Motivation Letter
ODB_2023	Les Orangeries Bierbais	Hévillers	Permanent project	ENV– CULT ART	2	18+	Motivation Letter

ESPERANZAH !

Code	SVI_ESPERANZAH_2024
Name	Esperanzah Festival
Location	Floreffe
Type	ENVI – FEST
Age	18+
Volunteers	5



Presentation of the partner

Esperanzah! is a world music festival that has offered a varied programme of well-known and lesser-known artists since 2002. Every year it is an alternative line-up, open to the world and based on discovery. A programme that expresses cultural diversity and deliberately goes against the tide of monopolies, algorithms and the mainstream. It takes place at Floreffe Abbey, located between Charleroi and Namur in Belgium.

Association, organizer of the Esperanzah music festival, aims to design and organize remarkable sites, events or cultural and social activities.

Volunteer work

Volunteers will be responsible for cleaning the festival site. They will collect waste so visitors can attend concerts in a welcoming and safe site. They will also be assigned physical tasks. They will have to make festival-goers aware of the protection of the environment. Volunteers will work from 9am to midday and from 1pm to 5pm. Your job is to keep the area clean and tidy. During the festival, volunteers are free to enjoy too! The tasks that need to be done can be physical.

Accommodation

Volunteers will be accommodated in a dormitory. Kitchen, shower and toilet will be available, but they will share it with another group of volunteers. There will be no washing machine. You will be asked to bring a mattress and a sleeping bag. Do not forget to bring working clothes as it can be rainy from time to time.

Food

Three meals are provided each day for volunteers. Vegetarian volunteers will receive special meals. Only during the festival and not during the days off.

Specific information

Clothing: Boots or hiking shoes (you might not want to take nice shoes because you might get VERY dirty). Do not forget, everything will take place outside. Work clothes (for the construction work), and comfortable clothes (for the festival). Summer



clothes AND winter clothes because it can get warm or cold!

In Belgium we can have very rainy summers with temperatures around 15°C but we can also have periods of high heat with dry weather and temperatures around 35°C, so we have to check the weather before leaving and be ready for anything.

Volunteers need to bring clothes that dry fast because if you get wet, you might have to change clothes several times a day. If you think about bringing clothes that dry fast, you will not end up with only wet clothes left.

Meeting point

21, Boucle des Métiers, 1348 Ottignies-Louvain-la-Neuve, Belgium. Arrival days are from Monday to Friday between 11am and 4pm. Outside these hours, we recommend you to take a hotel room on your own.

To get to the meeting point you can take the train from the airport: <https://www.belgiantrain.be/en>.

Camp language

The project allows you to speak either French or English. You will meet people from all over the world, so English will often be the language used.

Do not forget: there will be 10 of you on the project. The group can be a support even in the comprehension of linguistic. We do not ask for bilingual people.

Location



- **Nearest airport:** Brussels South Charleroi Airport – 29 km
- **Nearest train station:** Floreffe Station – 2 km
- **Transport between the railway station and the place of volunteering:** Bus 10 (12min)

About Floreffe

Floreffe is a French-speaking town of Belgium located in the Walloon Region in the province of Namur.

There is a fabulous range of things to do in and around this destination. Nothing compares to watching great masterpieces when your soul needs to be transported. By looking at the fabulous works of art in the Félicien Rops museum, see if you can find a deeper meaning in them.

PROJECT SUMMARY

Project name: Esperanzah !

The project includes:

- Introduction course
- One night at the bed and breakfast in Louvain-la-Neuve
- Follow-up during the whole project
- Invitation letter or additional documentation for visa application.
- Accommodation in a shared room
- Train tickets from Louvain-la-Neuve to Floreffe
- Meals

Not included in the project:

- Vacation days
- Pocket money
- Travel expenses
- Flight tickets
- Health insurance (mandatory to present before arrival)
- Transportation from the airport to the project

The conditions (participation fees, visa, accommodation, food, dates and cancellations) are subject to change.

CÔTE À CÔTE

Code	22-25
Name	Côte-à-Côte Go asbl
Location	Louvain-La-Neuve
Dates	Permanent project. Project duration: 1 to 6 months
Type	SOCI – DISA – EDU
Age	18+
Volunteers	1



Presentation of the partner

The Côte-à-Côte association has built a passive home in the heart of Louvain-la-Neuve for young adults with motor disabilities such as cerebral palsy (CP). It thus offers these young people the opportunity to live their lives independently.

Côte-à-Côte Go ASBL has set itself the mission of creating an environment that enables CPs to realize their life project through autonomy and solidarity in order to become actors in society. This project also allows the inhabitants and friends of Côte-à-Côte Go ASBL, with or without disabilities, to enrich themselves by sharing a life experience.

A pilot project in terms of housing:

- A passive construction, on a human scale, in the heart of the city of Louvain-la-Neuve.
- A grouped housing unit that brings together 11 young adults with CP, an Erasmus student with reduced mobility, a student working on a disability-related issue, two carers and their families.

A pilot project in terms of support:

- A personalized life project.
- A maximum of autonomy with a maximum of social links.

The people | the CP

- Cerebral Palsy (CP) is the result of a non-progressive, permanent brain injury that occurs in the developing brain.
- A syndrome combines posture and movement disorders. It is sometimes accompanied by associated disorders: epilepsy, speech, vision, etc.

Volunteer work

The volunteer will be a part of the household and will share the values of Côte-à-Côte. He will accompany the people in their daily life; bring his own ideas and his energy in a mixed group of people.



Depending on his abilities and his adaptation, the volunteer will perform the following tasks alone or with someone:

- Manage daily life in a team setting while emphasizing the autonomy ability of each resident.
- Assist residents in their autonomy and self-sufficiency project.
- Organize community activities with the residents.
- Ensure safety and well-being of the residents by handling morning and evening activities. Morning: breakfast, preparation for outings, maybe escorting to the place of activity. Evening: dinner, leisure activities, getting to bed.
- As needed: ensure the security and well-being of residents at night.

Accommodation

The accommodation is included, it is a basic shared room. With access to shared bathroom and shower facilities.

Food

The volunteer will only receive an evening meal, for the rest of the meals the volunteer has to do his/her own shopping. There are several supermarkets and restaurants nearby.

Meeting point

21, Boucle des Métiers, 1348 Ottignies-Louvain-la-Neuve, Belgium. Arrival days are from Monday to Friday between 11am and 4pm. Outside these hours, we recommend you to take a hotel room on your own.

To get to the meeting point you can take the train from the airport: <https://www.belgiantrain.be/en>.

Language

The volunteer must be able to speak French or have a good knowledge of it in order to make himself understood by the residents.

Location



- **Nearest airports:**
 - Zaventem Airport (Brussels Airport) – 27 km
 - Brussels South Charleroi Airport – 40 km
- **Nearest train station:** Louvain-la-Neuve Station – 2 km

As the organization is located in the same city as SVI, you will have the opportunity to meet its members as well as participating in all local SVI activities.

About Louvain-la-Neuve

Located 30 km from Brussels in the heart of Walloon Brabant, the site of the University of Louvain-la-Neuve welcomes over 20,000 students in its eleven faculties.

Created in 1971 by the university, this city is one of the youngest in Europe. A city in the countryside, it offers an exceptional living environment to students, researchers, professors and inhabitants. Museums, cinemas, theaters, concert and exhibition halls, a swimming pool and sports center, restaurants and cafés, shops and green spaces: all contribute to the quality of its environment.

Its entirely pedestrianized urban center allows easy access to all academic buildings and provides an environment where students, researchers, professors and residents meet and form a unique social, cultural and economic fabric.

PROJECT SUMMARY

Project name: Côte à côte

Project duration: 1 to 6 months

The project includes:

- Introduction course and welcoming
- One cultural activity
- Follow-up during the whole project
- Invitation letter or additional documentation for visa application.
- Dinner
- Accommodation in a shared room

Not included in the project:

- Vacation days
- Travel expenses
- Flight tickets
- Health insurance (mandatory to present before arrival)
- Transportation from the airport to the project
- Breakfast and lunch (there are several stores nearby)

Optional:

- Online French course for 10 sessions of 1h each: 180€

The conditions (participation fees, visa, accommodation, food, dates and cancellations) are subject to change.

AUBERGE DE JEUNESSE JACQUES BREL

Code	SVI-AJJB25
Name	Auberge de jeunesse Jacques Brel
Location	Brussels
Dates	Permanent project. All year round except July and August. Project duration: 2 months minimum
Type	ENV - CULT - LEAD
Age	18+
Volunteers	2

Presentation of the partner

The association is affiliated to Hosteling International, the founding movement of the Youth Hostels.

As such, it offers accommodation to young people in particular (but not exclusively) who travel individually, with friends or in groups. It offers basic hotel services: catering (canteen with sustainable label), meeting rooms, a bar with local and craft beers. The association is also recognized by the Youth Service of the Wallonia-Brussels Federation as a meeting and accommodation center and organizes activities with young people aimed at developing their reflection on the world around them and taking an active part in it.

Volunteer work

Being an alternative hostel, the work carried out will mainly be hotel work:

- Creation and implementation of activities with the public (exhibitions, debates, visits, karaoke, etc.).
- Helping with the association's sustainability initiatives (reducing food waste, permaculture etc.).
- Helping with the smooth running of the service (occasional help with washing up and cleaning the rooms).
- Helping in welcoming users and running the bar.
- 1 or 2 weekend services (either Saturday or Sunday) may be requested.

Accommodation

- Single room - shower/toilet shared with the second volunteer.
- Services: access to the kitchen of the users.
- Wifi.
- Access to the laundry (washer-dryer).

Food

- Morning: breakfast (majority of organic products).
- Other meals: the volunteer has to buy and cook his own food, there is a kitchen available.



Language

- English (fluent)
- French (this is a plus!)
- Spanish (this is a plus!)

Location



- **Nearest airports:**
 - Zaventem Airport (Brussels Airport) – 14 km
 - Brussels South Charleroi Airport – 60 km
- **Nearest train station:** Central Station - 200 m

Meeting point

21, Boucle des Métiers, 1348 Ottignies-Louvain-la-Neuve, Belgium. Arrival days are from Monday to Friday between 11 am and 4pm. Outside these hours, we recommend you to take a hotel room on your own.

To get to the meeting point you can take the train from the airport: <https://www.belgiantrain.be/en>.

About Brussels

Brussels is not only the Belgian capital but also the European capital. The city combines the characteristics of a large city with the charm of smaller, quieter towns. Modern with a classical touch, the streets of Brussels are full of charm and history. Brussels can be visited on foot, by bike, but also by horse-drawn carriage.

No, the people of Brussels do not eat chips every day. That said, they are still proud of their chip shops, and there can be a queue of people outside the best ones at all hours. A very cosmopolitan city, Brussels offers a range of different cuisines from around the world scattered throughout the city.



PROJECT SUMMARY

Project name: Auberge de jeunesse Jacques Brel

Project duration: 2 months minimum

The project includes:

- Introduction course
- One cultural activity
- One night at the bed and breakfast in Louvain-la-Neuve
- Follow-up during the whole project
- Invitation letter or additional documentation for visa application.
- Accommodation in a shared room

Not included in the project:

- Vacation days
- Pocket money
- Travel expenses
- Flight tickets
- Health insurance (mandatory to present before arrival)
- Transportation from the airport to the project
- Meals: the volunteer has to buy and cook his own food, there is a kitchen available.

Optional:

- Online French course for 10 sessions of 1h each: 180€

The conditions (participation fees, visa, accommodation, food, dates and cancellations) are subject to change.

LE FAGOTIN

Code	BE-SVI-fagotin
Name	Le Fagotin
Location	Stoumont
Dates	Permanent project
Type	ENVI – EDU – ANI
Age	18+
Volunteers	2



Presentation of the partner

Since its creation in 1995, the Fagotin association has progressively developed its activities until it became a major educational and touristic actor in the Belgian Ardennes. Today, the association is a combination of a «Nature Center», an «Animation Farm» and a «Meeting and Accommodation Center». Their values are centered around four key notions: CITIZENSHIP, SUSTAINABILITY, SOLIDARITY, GOODWILL.

Both in summer and winter, the Fagotin team, made up of experienced animators, offers camps, field trips, workshops, walks, guided tours, training sessions, meetings, etc. in order to promote the wonders of Wallonia's natural heritage to everyone, especially to young people.

Usually (outside of the COVID period), the team is made up of 16 employees who welcome more than 10,000 people each year. The nearest train station is Coo. A bus runs from Coo station to Le Fagotin.

Volunteer work

The tasks will vary depending on the needs of the farm. Volunteers can either help with the more physical work in the farm or with the social tasks. They will also take part in everyday tasks (cooking, washing the dishes, welcoming groups, etc.).

The work in the farm consists of many different tasks: maintenance of green areas (mowing, trimming, vegetable garden), maintenance of the pastures (fixing fences, cutting wood), maintenance of the animal shelters (construction and reparation), small interior and exterior improvements (painting, etc.).

The social tasks consist of helping the team with the organization of activities. Some activities are for children and teenagers, others are more touristic activities (donkey rides, hiking with drinks, etc.).

Accommodation

Volunteers can either sleep in a tent (with or without access to showers and toilets) or in a residential center. The participation fee per day / per person will vary according to the option chosen by the volunteer.

Food

The volunteer has to buy and cook his own food, there is a kitchen available.





© Le Fagotin

Language

It is recommended to be able to speak a few words of French or to be willing to learn French.

Meeting point

21, Boucle des Métiers, 1348 Ottignies-Louvain-la-Neuve, Belgium. Arrival days are from Monday to Friday between 11am and 4pm. Outside these hours, we recommend you to take a hotel room on your own.

To get to the meeting point you can take the train from the airport: <https://www.belgiantrain.be/en>.

About Stoumont

Our partner association is in Stoumont, in the heart of the Belgian Ardennes. It is a quiet village, surrounded by forests. It is the perfect place to go for a walk in the forest. It has already worked with volunteers. Each year, about fifteen interns come and help on the farm. They make it available to the organization. It has bought another building in which work will be done. It will be converted into a residential center.

Stoumont is a very special place in the province of Liège. Difference in altitude within the municipality is around 400 meters and it has many water sources. This is the perfect place to really get to know. It is a very small town with very few activities.

Location



- **Nearest airports:**
 - Liege Airport – 42 km
 - Maastricht Airport – 85 km
 - Brussels South Charleroi Airport – 129 km
 - Zaventem Airport (Brussels Airport) – 134 km
- **Nearest train station:** Stoumont Station – 6 Km

PROJECT SUMMARY

Project name: Le Fagotin

Project duration: 1 to 6 months

The project includes:

- Introduction course
- One cultural activity
- One night at the bed and breakfast in Louvain-la-Neuve
- Follow-up during the whole project
- Invitation letter or additional documentation for visa application.
- Accommodation in a shared room
- Train tickets from Louvain-la-Neuve to Coo.

Not included in the project:

- Vacation days
- Pocket money
- Travel expenses
- Flight tickets
- Health insurance (mandatory to present before arrival)
- Transportation from the airport to the project
- Meals: the volunteer has to buy and cook his own food, there is a kitchen available.

Optional:

- Online French course for 10 sessions of 1h each: 180€

The conditions (participation fees, visa, accommodation, food, dates and cancellations) are subject to change.

RENAISSANCE

Code	SVI_REN_2022
Name	Renaissance
Location	Braine L'Alleud
Dates	Permanent project. Project duration: 1 to 6 months
Type	SOCI – DISA – EDU
Age	18+
Volunteers	2



Presentation of the partner

Renaissance ASBL is a residential center hosting 20 adults who were born with physical disabilities (cerebral palsy). The center aims at giving those people an adapted living place. Renaissance is a residential center in which each occupant has to take part in the daily tasks according to their abilities. Various specialized people supervise these tasks: educators, occupational therapists, speech therapists, nurses, a caseworker, and physiotherapists, a multidisciplinary team in which each person accompanies the resident individually within the group. The center highlights the importance of cultural exchange, openness, and encounters.

Volunteer work

During the project, the volunteer will take part in the community life of the residential center under the supervision of staff members. They will share meals with the residents, among other things:

- Life at the center: cooking, food stocks control, laundry, cleaning activities etc.
- Leisure and creative activities: theater, well-being, painting, expression, comics.
- Activities organized out of the center: shopping, cultural excursions, sports, etc.
- Special events: Run & Bike (adapted bicycles), Christmas market.

The volunteers will not be in charge of medical care (washing the residents, putting them to bed, waking them up, etc.). A meeting will take place on a monthly basis to report on the volunteer's stay.

The volunteers are allowed to meet their tutor or the director of the center whenever they want. They will never have to stay alone with the residents and will be given safety instructions by a prevention adviser.

Accommodation

Accommodation in a private room will be provided.

Food

Three meals a day will be provided to the volunteers.



Specific information

- The volunteers must have the maturity needed to face the challenges of daily life with physically disabled people.
- Prior knowledge of French is essential because some residents only speak French and need clear indications.
- The center needs volunteers who are dynamic, motivated, eager to learn and to take initiative, able to question themselves and to accept criticism from the staff.
- They need to be aware that they will live several months with different people who have a way of life, which is sometimes totally opposed to our daily life.

Location



- **Nearest airports:**
 - Zaventem Airport (Brussels Airport) – 24 km
 - Brussels South Charleroi Airport – 27 km
- **Nearest train station:** Braine-l'Alleud Station – 3 km

Language

Minimum basic level of French.

Meeting point

21, Boucle des Métiers, 1348 Ottignies-Louvain-la-Neuve, Belgium. Arrival days are from Monday to Friday between 11 am and 4 pm. Outside these hours, we recommend you to take a hotel room on your own.

To get to the meeting point you can take the train from the airport: <https://www.belgiantrain.be/en>.

About Braine-L'Alleud

As far as leisure is concerned, Braine-l'Alleud is home to a cinema complex, many sports halls, and a cultural center. Braine-l'Alleud is not far away from the historic site of Waterloo. Many hiking routes are available in the area.

Braine-l'Alleud is a Walloon municipality in the Belgian province of Walloon Brabant, about 20 kilometres south of Brussels. The Braine-l'Alleud municipality includes the former municipalities of Braine-l'Alleud proper, Ophain-Bois-Seigneur-Isaac, and Lillois-Witterzée. It also includes the hamlet of Sart-Moulin, the inverted name of which inspired Hergé's Moulinsart castle. The famous Lion of Waterloo where the eponymous battle took place is in the territory of Braine-l'Alleud. It is a very small town with very few activities.

PROJECT SUMMARY

Project name: Renaissance

Project duration: 1 to 6 months

The project includes:

- Transportation from Louvain-la-Neuve to the project site (Braine-l'Alleud)
- Introduction course and welcoming
- One cultural activity
- One night at the bed and breakfast in Louvain-la-Neuve.
- Follow-up during the whole project
- Invitation letter or additional documentation for visa application
- Meals
- Accommodation in a private or shared room

Not included in the project:

- Vacation days
- Pocket money
- Travel expenses
- Flight tickets
- Health insurance (mandatory to present before arrival)
- Transportation from the airport to the project

Optional:

- Online French course for 10 sessions of 1h each: 180€

The conditions (participation fees, visa, accommodation, food, dates and cancellations) are subject to change.

AUBERGE DE JEUNESSE DE BOUILLON

Code	SVI-BAUTO-EXT
Name	Auberge de jeunesse
Location	Bouillon (Province du Luxembourg)
Dates	Permanent project. From March to September. 1 months minimum to 6 months
Type	EDU-SOCI-MANU
Age	18+
Volunteers	1

Presentation of the partner

The Belgian Youth Hostel is a member of "Hostelling International network". It is a worldwide network of Not-for-Profit Youth Hostel Associations, their local members are all passionate advocates of sustainable travel and are dedicated to connecting young people and local communities in a peaceful and respectful way. In Belgium, the "Auberges de Jeunesse" (youth hostels) are recognized as non profit organizations and as youth organizations by the Wallonie Bruxelles Federation (the french speaking government of Belgium).

The Youth Hostel in Bouillon overlooks the city, offering a stunning view of the Semois and the fortress, one of Europe's most impressive castles. Magnificent view of the castle and the city, on a wooded site of 18,000m². The Auberge welcomes people from all walks of life in a young and relaxed atmosphere.

Volunteer work

- Reception of the public.
- Animation, creation or organization of activities to facilitate encounters.
- Help with communication .
- Helping in the kitchen and the bar .
- If possible, meeting with other volunteers in other youth hostels to create a common project.
- Other tasks depending on the profile: help with maintenance.

The schedule will depend on the tasks:

- 8:00 - 12:00
- 9:00 - 16:00
- 16:00 - 21:00

Accommodation

Private room with a private bathroom.

Food

Some meals are offered, others are at the expense of the volunteer depending on the group meals.





Meeting point

21, Boucle des Métiers, 1348 Ottignies-Louvain-la-Neuve, Belgium. Arrival days are from Monday to Friday between 11am and 4pm. Outside these hours, we recommend you to take a hotel room on your own.

To get to the meeting point you can take the train from the airport: <https://www.belgiantrain.be/en>.

Language

The volunteer should at least be fluent in English, if he is not in French

About Bouillon

The locality is an important tourist centre.

Bouillon is a town in the south of Belgium, close to the French border. It is famous for the medieval castle of Bouillon overlooking the Semois. The Godefroid de Bouillon Archaeoscope is a multi-media attraction on the banks of the river, illustrating the life and times of Godefroid de Bouillon, a former resident of the castle and a crusader. Nearby is the Ducal Museum, which traces the history of the region through art, weapons and folk artefacts.

Location



- **Nearest airport:** Luxemburg Airport – 184 km
- **Nearest train station:** Paliseul Station – 116 km
15min by car, 1h by bus
- **Nearest bus line:** 10min walk

PROJECT SUMMARY

Project name: Auberge de jeunesse de Bouillon

Project duration: 1 to 6 months

The project includes:

- Introduction course
- One cultural activity
- One night at the bed and breakfast in Louvain-la-Neuve
- Follow-up during the whole project
- Invitation letter or additional documentation for visa application.
- Meals
- Accommodation in a shared room
- Train tickets from Louvain la Neuve to Bouillon.

Not included in the project:

- Vacation days
- Pocket money
- Travel expenses
- Flight tickets
- Health insurance (mandatory to present before arrival)
- Transportation from the airport to the project

Optional:

- Online French course for 10 sessions of 1h each: 180€

The conditions (participation fees, visa, accommodation, food, dates and cancellations) are subject to change.

AUBERGE DE JEUNESSE MALMEDY

Code	SVI-B
Name	Auberge de jeunesse Malmédy
Location	Malmédy (Province de Liège)
Dates	Permanent project. From March to October
Type	EDU-SOCI-MANU
Age	18+
Volunteers	1

Presentation of the partner

Our hostel is a member of "Hostelling International network". It is a worldwide network of Not-for-Profit Youth Hostel Associations, their local members are all passionate advocates of sustainable travel and are dedicated to connecting young people and local communities in a peaceful and respectful way. In Belgium, the "Auberges de Jeunesse" (youth hostels) are recognized as non profit organizations and as youth organizations by the Wallonie Bruxelles Federation (the french speaking government of Belgium).

Our hostel is a green hostel and is located 2 km from the small town of the center in Bevercé. We are close to the Hautes Fagnes with its beautiful landscape. What makes us special is our activities! We have an aerial course, a climbing wall, scooters and other activities in our infrastructure. Our hostel is a sports hostel, so you have to like nature, sports, peace and quiet, hiking, and be able to be alone at times and keep yourself busy. Our team is also festive! The hosts and receptionists will be happy to inform you about the festivities in the region. The best time to come into this project is between March and October.

Volunteer work

- Reception of the public.
- Animation, creation or organization of activities to facilitate encounters.
- Help with communication.
- Helping in the kitchen and bar.
- If possible, meeting with other volunteers in other youth hostels to create a common project Other tasks: help with cleaning common areas, rooms, gardening (mowing, leaves etc.).

Working time:

- The volunteer works 24 hrs per week.
- The volunteer does max 4 or 5 hrs per day.

The schedule would be:

- Either in the morning from 07:00 to 12:00 or a little later depending on the tasks.
- Or reception help at 4pm or during the day if there is an activity.

Flexibility in the hours, but with a schedule known in advance so that he can plan things on his own.



Accommodation

Private room, but during the stay the person may have to change rooms, depending on the planning, but it will always be in a private room.

Food

Meals are provided and offered, if no meals are available, the volunteer is given a lump sum for his meal.

Language

A basic knowledge of French is essential.

Meeting point

21, Boucle des Métiers, 1348 Ottignies-Louvain-la-Neuve, Belgium. Arrival days are from Monday to Friday between 11am and 4pm. Outside these hours, we recommend you to take a hotel room on your own.

To get to the meeting point you can take the train from the airport: <https://www.belgiantrain.be/en>.

Location



- **Nearest airport:** Zaventem Airport (Brussels Airport) – 4 km
- **Nearest train station:** Nossegem Station – 2.6 km

About Malmedy

Malmedy is a charming town in the Walloon region of Belgium, more precisely in the province of Liège. It's nestled in the heart of the Belgian Ardennes, surrounded by picturesque green countryside, making it an ideal place for outdoor enthusiasts and nature lovers.

Stunning natural landscape:

Malmedy is surrounded by wooded hills, dense forests and winding rivers, offering an exceptional natural setting for hiking, mountain biking, camping and other outdoor activities. Nature lovers will appreciate the many opportunities for discovery in the surrounding area.

Historical heritage:

Malmedy boasts a rich historical heritage, including the beautiful 18th-century St. Peter's Cathedral and the Benedictine Abbey. The cobbled streets of the town center are lined with traditional houses, creating a picturesque atmosphere.

Cultural events:

The town regularly hosts cultural and festive events, such as music festivals, art exhibitions and local markets. These events are the perfect opportunity to discover the local culture and meet Malmedy's friendly inhabitants.

Belgian cuisine:

Malmedy's restaurants and cafés offer delicious Belgian cuisine, with must-try dishes such as moules-frites, waffles and, of course, a wide selection of Belgian beers. Volunteers will also have the opportunity to sample delicious local specialties.

Friendly atmosphere:

Malmedy is a welcoming and friendly town, where it's easy to feel at home. The locals are generally open to visitors and happy to share their love of their town.

Proximity to outdoor activities: In addition to outdoor activities in Malmedy itself, the town is an ideal starting point for exploring the Ardennes, such as hiking, biking, skiing in winter or discovering the local flora and fauna.

As a volunteer in Malmedy, you'll have the chance to live in a beautiful natural setting, explore a rich history and immerse yourself in a warm and welcoming Belgian culture. Whether you want to contribute to local community projects or simply enjoy the peaceful atmosphere of the town, Malmedy offers a unique experience in Belgium.

PROJECT SUMMARY

Project name: Auberge de jeunesse Malmedy

Project duration: 1 to 6 months

The project includes:

- Introduction course
- One cultural activity
- One night at the bed and breakfast in Louvain-la-Neuve
- Follow-up during the whole project
- Invitation letter or additional documentation for visa application.
- Meals
- Accommodation in a shared room
- Train tickets from Louvain la Neuve to Malmedy.

Not included in the project:

- Vacation days
- Pocket money
- Travel expenses
- Flight tickets
- Health insurance (mandatory to present before arrival)
- Transportation from the airport to the project

Optional:

- Online French course for 10 sessions of 1h each: 180€

The conditions (participation fees, visa, accommodation, food, dates and cancellations) are subject to change.

KALEO

Code	SVI_KALEO_2023
Name	KALEO
Location	Brussels
Dates	Permanent project. Project duration: 1 to 6 months
Type	EDU-SOCI-CULT
Age	18+
Volunteers	2



Presentation of the partner

Kaleo is a non-profit organization that provides accommodation for all kinds of people: young people, families, school groups, sports clubs and retirees. They have B&B in Eupen, Han-sur-Lesse, Louvain-la-Neuve, Ovifat, Villers-Sainte-Gertrude and Wanne and provide full boarding to their guests.

Throughout the year, the B&B's offer a series of activities for the guests to enjoy. Kaleo also organizes thematic school trips for kindergarden, primary and secondary school students. They also hold workshops during school vacation for young people from 5 to 16.

Kaleo provides a social and dynamic atmosphere by organizing events such as "apéros des voisins" ("neighbor's drinks"), craft markets, storytelling walks or even Halloween and New Year's Eve parties.

Volunteer work

Volunteers will have the opportunity to stay in several B&B's during their project. At each B&B, they will be able to appreciate the atmosphere and participate in daily life activities. Here are examples of tasks volunteers will be asked to do:

- Welcoming groups.
- Creating and organizing activities for training courses.
- Creating and organizing activities for school groups.
- Helping the organization in the preparation of events in B&B's.
- Creating and setting up activities with the guests
- Helping with the smooth running of the B&B (serving meals, helping with cleaning, etc.).

Volunteers do not choose the project site, but the association assigns 1, 2 or 3 sites and a program according to their requirements.

Accommodation

Volunteers will be staying in different B&B's, depending on availability, events and activities. In each B&B's, they will have a room (usually a private room with a shared bathroom).

Food

Volunteers will be provided with food (3 meals a day). However, at certain times, when there are no guests at the B&B, the kitchens will be closed, and meals will not be available. Volunteers will have to buy their food elsewhere. **Some of the B&Bs only offer breakfast**, so the volunteer is responsible for his/her other meals.

Language

- The volunteer must be able to speak French or have a good knowledge of it in order to make himself understood by the residents.
- The volunteer must be fluent in English.



Meeting point

21, Boucle des Métiers, 1348 Ottignies-Louvain-la-Neuve, Belgium. Arrival days are from Monday to Friday between 11am and 4pm. Outside these hours, we recommend you to take a hotel room on your own.

To get to the meeting point you can take the train from the airport: <https://www.belgiantrain.be/en>.

About Wallonia

Kaleo offers to host volunteers in 6 B&B's spread throughout Wallonia: Eupen, Han-Sur-Lesse, Louvain-la-Neuve, Ovifat, Villers-Sainte-Gertrude et Wanne.

They are the perfect places to rest and discover the Belgian culture.

From the Hautes-Fagnes to the banks of the Lesse passing by the pedestrian university town, you will have the opportunity to discover Wallonia and its diversity.

Location



- **Nearest airport:** Charleroi Airport – 50 km
- **Nearest train station:** Charleroi Airport – 50 km

PROJECT SUMMARY

Project name: Kaleo

Project duration: 1 to 6 months

The project includes:

- Introduction course
- One cultural activity
- One night at the bed and breakfast in Louvain la Neuve
- Follow-up during the whole project
- Invitation letter or additional documentation for visa application.
- Meals
- Accommodation in a shared room

Not included in the project:

- Vacation days
- Pocket money
- Travel expenses
- Flight tickets
- Health insurance (mandatory to present before arrival)
- Transportation from the airport to the project

Optional:

- Online French course for 10 sessions of 1h each: 180€

The conditions (participation fees, visa, accommodation, food, dates and cancellations) are subject to change.

AUBERGE DE JEUNESSE MONS

Code	SVI-ADJ Ms
Name	Auberge de jeunesse Mons
Location	Mons (Hainaut)
Dates	Permanent project. The project welcomes volunteers all year round except in July and August. Project duration: 1 to 6 months
Type	EDU-SOCI-MANU
Age	18+
Volunteers	1



Presentation of the partner

The association is affiliated to Hosteling International, the founding movement of the Youth Hostels. As such, it offers accommodation to young people in particular (but not exclusively) who travel individually, with friends or in groups. It offers basic hotel services: catering (canteen with sustainable label), meeting rooms, a bar with local and craft beers. The association is also recognized by the Youth Service of the Wallonia-Brussels Federation as a meeting and accommodation center and organizes activities with young people aimed at developing their reflection on the world around them and taking an active part in it.

Volunteer work

Being an alternative hostel, the work carried out will be mainly hotel work.

- Creation and implementation of activities with the public (exhibitions, debates, visits, karaoke, etc).
- Helping with the association's sustainability initiatives (reducing food waste, permaculture Etc.).
- Helping with the smooth running of the service (occasional help with washing up and cleaning the rooms).
- Helping to welcome users and running the bar.

Accommodation

- Single room - shower/toilet shared with the room of the second volunteer
- Services: access to the kitchen of the users
- Wifi
- Access to the laundry (washer-dryer)

Food

- **Morning:** breakfast (majority organic products).
- **Noon:** complete balanced meal.
- **Evening:** complete balanced meal.

Language

- English (fluent)
- French (this is a plus!)

Meeting point

21, Boucle des Métiers, 1348 Ottignies-Louvain-la-Neuve, Belgium. Arrival days are from Monday to Friday between 11am and 4pm. Outside these hours, we recommend you to take a hotel room on your own.

To get to the meeting point you can take the train from the airport: <https://www.belgiantrain.be/en>.

Location



- **Nearest airport:** 40 km
- **Nearest train station:** 1 km
- **Nearest bus line:** 10 meters

About Mons

French-speaking city and capital of Hainaut, Mons is located in the west of Belgium. With its cobbled streets, the magnificent Grand-Place and its imposing Belfry, Mons has everything to play for in the big league. Between heritage, culture and gastronomy, you can't help but be happy.

Little information about the city of Mons: European Capital of Culture 2015



PROJECT SUMMARY

Project name: Auberge de jeunesse Mons

Project duration: 1 to 6 months

The project includes:

- Introduction course
- One cultural activity
- One night at the bed and breakfast in Louvain la Neuve
- Follow-up during the whole project
- Invitation letter or additional documentation for visa application.
- Meals
- Accommodation in a shared room
- Train tickets from Louvain la neuve to Mons.

Not included in the project:

- Vacation days
- Pocket money
- Travel expenses
- Flight tickets
- Health insurance (mandatory to present before arrival)
- Transportation from the airport to the project

Optional:

- Online French course for 10 sessions of 1h each: 180€

The conditions (participation fees, visa, accommodation, food, dates and cancellations) are subject to change.

LES ORANGERIES BIERBAIS

Code	ODB_2023
Name	Les Orangeries Bierbaïs
Location	Hévillers
Dates	Permanent project. The project welcomes volunteers from March to October. Project duration: 1 to 6 months
Type	ENV-CULT-ART
Age	18+
Volunteers	2

Presentation of the partner

Our partner association is located in a park known in the 19th century for its world-renowned monumental greenhouses, 30km south of Brussels. So impressive in 1828, that its landscape architect went on to design the magnificent Botanique in Brussels. We created a «third place» in the park, where the orangeries that framed the largest greenhouse still stand. Today, it's a place where creativity, reflection, exchange of knowledge, sharing of experience and solidarity - both local and international - come together. On site, we organize residencies for researchers and artists, concerts, exhibitions, screenings, workshops, meetings with the public, performances, permaculture initiations, etc.

Also because «poetry is a weapon charged with the future» (Gabriel Celaya). And because permaculture is the key to linking aesthetics with the new pages of agriculture, ecology and social issues.

Volunteer work

Volunteers are invited to take part in a range of activities linked to:

- Introduction to and management of a historical permaculture park (vegetable garden, biodiversity, etc.).
- Organizing cultural activities.
- Animation of our social network.
- Participatory eco-construction workcamp.
- Research into the fascinating history of our site: the mysterious appearance and disappearance of monumental greenhouses in the 19th century.
- Digitization of the Serge Pahaut book collection, a famous Belgian mythologist.
- Work on the archives of Paul van der Belen, pioneer of peace volunteers for international cooperation.



Accommodation

There are two options for accommodation:

- A/ in a room with a shared bathroom.
- B/ from spring onwards, light accommodation in the middle of the park (caravan, tent), dry toilet, solar shower.

Food

For food, there are also two options:

- A/ volunteers are fed by the hosts (included in the participation fees).
- B/ volunteers have a kitchen at their disposal and manage their own meals.

Language

The project allows you to speak either French or English. You will meet people from all over the world so English will often be the language used.

Meeting point

21, Boucle des Métiers, 1348 Ottignies-Louvain-la-Neuve, Belgium. Arrival days are from Monday to Friday between 11am and 4pm. Outside these hours, we recommend you to take a hotel room on your own.

To get to the meeting point you can take the train from the airport: <https://www.belgiantrain.be/en>.

Location



- **Nearest airport:** Charleroi Airport
- **Nearest train station:** Mont Saint-Guibert

About Héவில்

The park known today as the Orangeries de Bierbais is located in Héவில், a section of the commune of Mont-Saint-Guibert, in the Walloon Region of the province of Walloon Brabant in Belgium.

Until the late 1980s, the Orangeries de Bierbais were part of the Château de Bierbais park. In the 19th century, this 2.5-hectare part of the park was home not only to a collection of remarkable fruit and ornamental trees, but also to internationally renowned monumental heated greenhouses, the Bierbais greenhouses, within English-style gardens designed by landscape architect Charles-Henri Petersen, who lived in Bierbais until his death in 1859.



PROJECT SUMMARY

Project name: Les Orangeries Bierbais

Project duration: 1 to 6 months

The project includes:

- Introduction course
- One cultural activity
- One night at the bed and breakfast in Louvain la Neuve
- Follow-up during the whole project
- Invitation letter or additional documentation for visa application.
- Accommodation in a shared room

Not included in the project:

- Vacation days
- Pocket money
- Travel expenses
- Flight tickets
- Health insurance (mandatory to present before arrival)
- Transportation from the airport to the project
- Meals: the volunteer has to buy and cook his own food, there is a kitchen available.

Optional:

- Online French course for 10 sessions of 1h each: 180€

The conditions (participation fees, visa, accommodation, food, dates and cancellations) are subject to change.

PRIVATE FRENCH LESSONS ONLINE WITH SVI – A TICKET TO A NEW DESTINATION

The SVI co-ordinators never stop pampering you with new activities to help you spend a pleasant and useful winter.



French lessons with an online teacher

SVI offers you the chance to master your French via online private lessons. All the teachers who work with SVI are competent and qualified. Whether you're learning the language for study, career, travel, volunteering or personal development, one-to-one online tuition is a fun and interactive way to develop the skills you need.

You can discuss your goals and interests with your teacher to work out a study plan. Together you'll find a pace and approach that suits you.

All levels, including complete beginners!

LES PAPOTES DU SVI!

FRENCH CONVERSATION TABLES

Learning the language - yes, it's a complicated, multilateral process. You need to be able to assimilate the different structures of the language. So doing a bit of grammar and conjugation is an essential step!

But you mustn't forget the end goal. Whatever the case, we learn the language to...? To talk!

Come and have a chat at **Les papotes du SVI!** French conversation tables catch their breath and wish you a warm welcome. What's in store for you?

We'll be getting together to talk about anything and everything once a week. The chats will be led by two qualified teachers and SVI coordinators





SERVICE VOLONTAIRE INTERNATIONAL BELGIUM