



**2025-2026
Thailand
National Profile**

Thailand

ประเทศไทย



Thai Food Carving Art



ICYE
Thailand



Volunteer **Spirit** Association

Thailand In Brief



Official Name	Kingdom of Thailand
Term of Citizenship	Thai
Capital City	Bangkok (Krung Thep Maha Nakhon)
Region	South-East Asia
Population	71,801,279 (2023)
Area	513,120 km²
Currency	Baht
Time Zone	UTC+7 (ICT)
GDP	514.94 Billion USD (2023) per capita 7,171.8 USD (2023)
Language	Thai, English
Date Format	dd/mm/yyyy (BE)
Driving side	Left
Calling Code	+66
Voltage	The standard voltage is 220V, 50Hz The power plugs and sockets are most commonly type A / B / C / O

CEO Of Salford & Co.

www.reallygreatsite.com





ICYE
Thailand



Thailand Facts



- Thailand is one of the few countries that **has never been colonized by nations**. The name of Thailand in Thai is 'Prathet Thai,' which means 'Land of the Free.'
- Buddhism as a Major Religion
- **Most Thai people have two names**—their full, official name and their nickname. Unlike in other countries where a nickname is typically just a shortened version of the real name, Thai nicknames are meaningful and chosen by parents at birth.
- Eating Customs. **Thais eat with spoons and forks.**
- The head is considered sacred, while the feet are regarded as lowly.
- National Anthem Tradition. The national anthem is played twice a day at 8:00 a.m. and 6:00 p.m. and most of the Thai **stand up straight and respect their nation**.
- **Thai New Year, known as Songkran, is celebrated on April 13th every year.**
- Rice is a staple at every meal.
- The Thai language consists of 76 letters—44 consonants, 32 vowels, and 5 tones.

www.reallygreatsite.com



History.

Early Days

Little is known of Thailand's earliest inhabitants, but there are archaeological sites in the northeast of the country that contain evidence of rice cultivation and bronze casting that date back 5,000 years. In the early days a succession of tribal groups controlled what we now know as Thailand. The Mon and Khmer peoples established powerful kingdoms that included large areas of the country. These kingdoms came into contact with other South Asian peoples and absorbed their religious, political and cultural ideas as well as their institutions and these later influenced the development of Thailand's culture and national identity.

The Tai People

The Tai people originally lived in southwest China and migrated into the main part of Southeast Asia over many centuries. The first mention of their existence in the region is a 12th century AD inscription at Angkor Wat, which refers to syam or "dark brown" people as being vassals of the Khmer monarch. This is how Thailand became known as Siam and its people the Siamese.

Sukhothai

In 1238 a Tai chieftain declared his independence from the Khmer and established a kingdom at Sukhothai in the broad valley of the Mae Nam River in the heart of modern day Thailand.

Ayutthaya

Sukhothai was succeeded in the 14th century by the kingdom of Ayutthaya. The kingdom of Ayutthaya became very powerful in the 14th & 15th centuries, so much so that it was able to defeat the kingdom of Angkor in 1431 thereby causing its decline. Over the centuries there were a number of conflicts with the Burmese which came to a head in 1767 when the Burmese invaded Ayutthaya and totally destroyed it. After a couple of years two national heroes, Taksin and Chakri, soon expelled the invaders and reunified the country under the Chakri Dynasty. In 1782, Chakri established his new capital in Bangkok. He was later given the title of Rama I and was the first king of the Chakri dynasty which has held power to this day.



History.

19th Century

During the nineteenth century it was the European powers, rather than Thailand's traditional enemies, that posed the greatest threat to the kingdom's survival. Thai success in preserving the country's independence (it was the only Southeast Asian country to do so) was in part a result of the desire of Britain and France for a stable buffer state between their dominions in Burma, Malaya and Indochina. More significantly though was the willingness of Thailand's monarchs, Mongkut (Rama IV, 1851-68) and Chulalongkorn (Rama V, 1868-1910), to negotiate openly with the European powers and to adopt European style reforms that modernized the country and won it sovereign status. However Siam, as it was then known, paid a high price for its independence losing control over Cambodia and Laos to France and ceding the northern states of the Malay Peninsula to Britain

20th Century

As a result of European intervention by 1910 the area of Southeast Asia under Thai control was a fraction of what it had been a century earlier. In the early decades of the twentieth century, Thailand's political system, armed forces and economy underwent drastic changes. Many wealthy Thais studied overseas and a small, Western educated elite with less traditional ideas emerged. In 1932 a bloodless coup d'etat by military officers and civil servants ended the absolute monarchy and inaugurated Thailand's constitutional era. Thailand changed its name from Siam in 1949.

The Modern Era

Since the far reaching changes of 1932 progress toward a stable, democratic political system has been erratic. Politics has been dominated by rival military cliques headed by powerful generals. These cliques have caused frequent coups d'etat and have imposed prolonged periods of martial law on the country. Parliamentary institutions, as defined by the fourteen constitutions written between 1932 and 1987, and competition among civilian politicians have generally been facades for military governments. Today the country has a fledgling democracy, watched over by the military and the new king who has just taken over the reins from H.M. King Bhumibol Adulyadej, the 9th King of the Chakri Dynasty, who was the country's longest reigning monarch until his death in 2016.

GEOGRAPHY

Thailand is located in Southeast Asia. The country covers an area of 513,000 square kilometers and, when looking on a map, resembles the shape on an axe. To the north it borders Myanmar and Laos and to the east Laos and Cambodia. The south is next to the Gulf of Thailand and Malaysia. Westwards is the Andaman Sea and Myanmar.

Thailand has six different types of terrain.



**Mountains and Plains
of the North**



Central Plains



Northeastern Plateaus



High Mountains of the West



**Mountains and Coastal Plains
of the East**



**Mountains, Plateaus, Coastal
Plains and Islands of the South**



Administrative system of Thailand

Currently, Thailand is governed under a system of parliamentary democracy with a constitutional monarchy, with the King as Head of State. The sovereign power can be divided into three branches

1. The legislative branch consists of the National Legislative Assembly, House of Representatives, Senate, and Parliament.
2. The executive branch consists of the prime minister, who is appointed by the King in accordance with the resolution of the National Legislative Assembly. Upon recommendation of the prime minister, the King appoints ministers. The prime minister is the head of government in Thailand and the leader of the ministers in the executive branch of the government.
3. The judiciary is the system of courts, consisting of the Court of Justice, the Constitutional Court, and the Administrative Court. The President of the Supreme Court of Justice, the President of the Constitutional Court, and the President of the Supreme Administrative Court are the heads of the judicial branch.

The local government is divided into local government executives and local government organization councils. Local government members in the executive branch and the legislative branch are elected directly by people. The administrative services of the executive branch of the government are divided into three levels: (1) the central government consists of ministries, bureaus, and departments; (2) the provincial government consists of 76 provinces; and (3) the local government consists of provincial administrative organizations, municipalities, sub-district administrative organizations, Bangkok, and Pattaya.





Thailand's

Economic Factsheet

Q2/2024

Inflation

0.8%

Q2/2024

Public Debt Per GDP

63.5%

August 2024

GDP Growth
Q2/2024

2.3%

International Reserves

224.3
bil. USD

Unemployment Rate

1.07%

Q2/2024

Q2/2024 Nominal GDP

515.8 bil. USD

Q2/2024

GDP per Capita

7,345.6
USD

Source: The National Economic and Social Development Council (NESDC) Trade Policy and Strategy Office (TPSO)

Economic Figure

Actual GDP Growth



2024 GDP Forecast

NESDC (August 2024)	2.3 - 2.8
BOT (April 2024)	2.6
World Bank (July 2024)	2.4
IMF (July 2024)	2.9

Estimated Annual Trade Forecast



	Export Value	Import Value	Trade Balance (bil. USD)
24/Q2	286.2	270.7	+15.5
24/Q1	285.7	275.3	+10.4
23/Q4	288.3	274.9	+13.4

Source: The National Economic and Social Development Council (NESDC)

International Tourist Arrivals (Millions)

2022	2023	Q1/2024	Q2/2024
11.15	28.15	9.37	8.13



Top International Tourist Arrivals (Q2/2024)

1	China	20.70%
2	Malaysia	15.59%
3	India	6.97%
4	S. Korea	4.63%
5	Lao PDR	3.82%

Source: Ministry of Tourism & Sport (MOTS)

Exports

Countries

1	USA	17.87%
2	China	12.07%
3	Japan	7.86%
4	Australia	7.86%
5	Malaysia	4.21%

Source: Ministry of Commerce (MOC)

Products

Q2/2024 Total Value = 73.32 bil. USD

1. Cars, Parts & Accessories
2. Automatic data processing machines
3. Precious Stones & Jewellery
4. Rubber Products
5. Machinery & Parts
6. Refine fuels
7. Polymers of ethylene, propylene, etc
8. Electrical Integrated Circuits
9. Chemical products
10. Teleprinters, telephone sets and parts

Imports

Countries

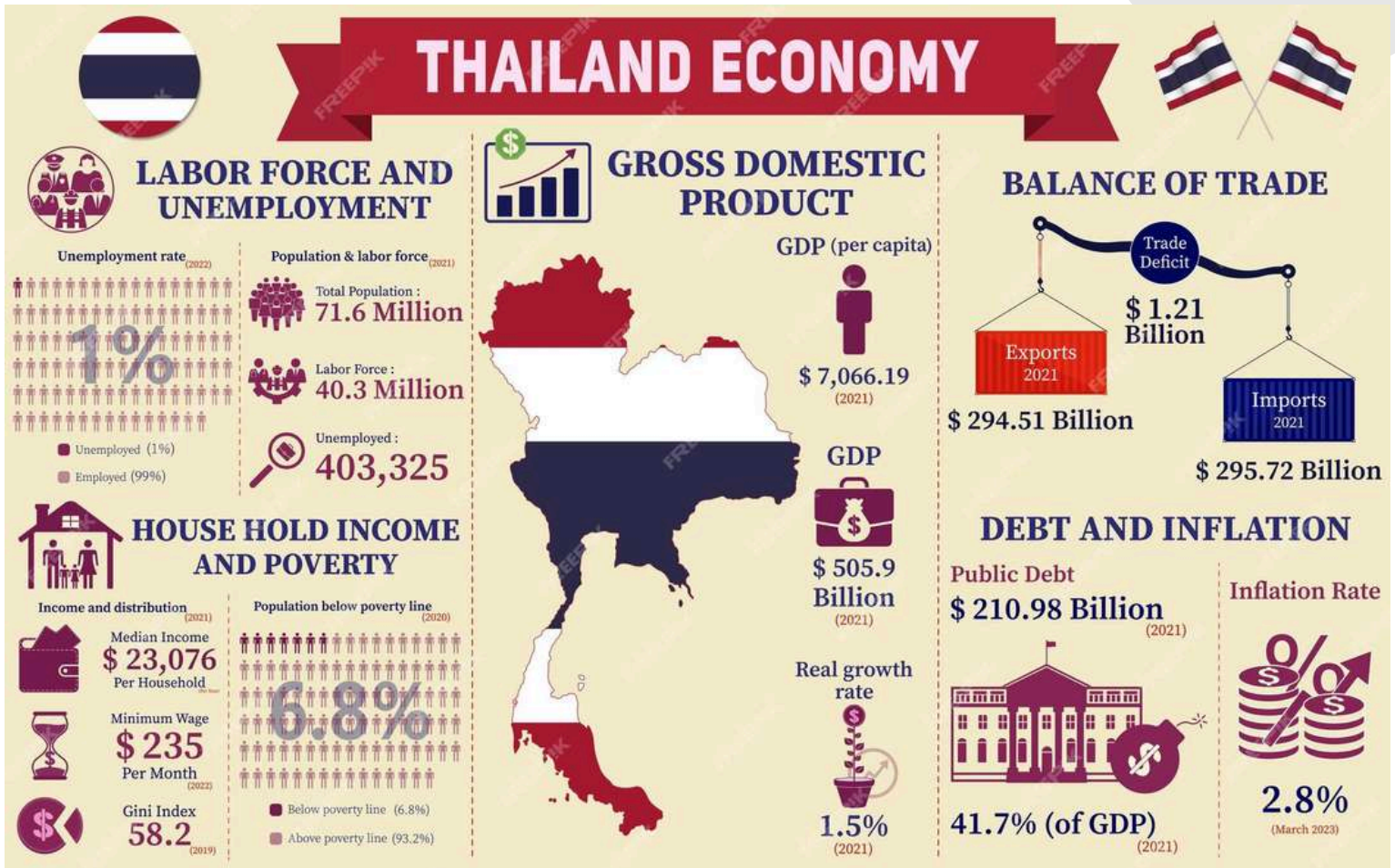
1	China	25.11%
2	Japan	9.28%
3	Taiwan	7.51%
4	USA	6.52%
5	UAE	5.51%

Source: Ministry of Commerce (MOC)

Products

Q2/2024 Total Value = 67.78 bil. USD

1. Crude Oil
2. Electrical Integrated Circuits
3. Machinery & Parts
4. Electrical Machinery & Parts
5. Chemical Products
6. Jewellery, Gold & Silver
7. Computers parts
8. Other Metal Ores
9. Iron & Steel Products
10. Natural Gas



The Office of Industrial Economics has prepared measures for developing nine key industries in Thailand that drive the addition of value

(Office of Industrial Economics developed measures Major sectors of industry in Thailand)

<p>1  Food industry</p>	<p>2  Electronic and electrical appliance industry</p>	<p>3  Automobile industry</p>
<p>4  Petrochemical industry</p>	<p>5  Chemical product industry</p>	<p>6  Rubber industry</p>
<p>7  Iron and steel industry</p>	<p>8  Plastic industry</p>	<p>9  Textile industry</p>

The Thai language

Thailand is a land of ancient civilizations with unique and outstanding features in the spoken and written forms of its language. It is one of the countries that has its own language. The Thai language is the official language of the country, which has been used for quite a long time, hundreds of years. However, the characteristics of the spoken language are different in each region, though the written form is standardized.

There are 44 Thai consonants but only 42 consonants are used these days. The two consonants that have not been used since 2002. Thai has 44 consonants and 21 distinct consonant sounds, as follows:

Many of the letters resemble one another, the differences being in the “head,” the small circle where the letter begins, and other shapes that distinguish them from their “family members.” Once these basic shapes and attachments are learned, it’s not hard to distinguish the letters.

The Thai language is split into different dialects, namely the central Thai dialect, southern Thai dialect, northeastern Thai dialect, and northern Thai dialect or Lanna language (Kam Mueang). Besides these, in some small communities, there are languages used within their groups, such as Thai Chinese people who speak Chinese, Muslim people in the lower southern region speaking Malayu, and hill tribe people who speak their own languages, but they use the same alphabet and written language across the country.

Due to the rapidly changing times today, new Thai words are created to be more easily spoken and written, becoming slang popularly spoken among teenagers, such as “ai tao,” which is used to begin a sentence that expresses adoration, or to add softness and cuteness to the noun or adjective that usually comes after. “Pang mak” is used to describe anything as excellent, majestic, stunning, popular, and so on. In Thailand, foreign languages are often used in daily communication, such as English, Chinese, or Japanese among people working with foreigners, such as people working in the government sector, in the fields of education, tourism, or commerce, and those who graduated from overseas. Moreover, there are some local languages and other language varieties.

พยัญชนะ Consonants

ก	ข	ค	ฅ	ง	จ	ฉ	ช	ซ	ฌ	ญ	ฎ
g	k	k	k	ng	j	ch	ch	s	ch	y	d
ฏ	ฐ	ฑ	ฒ	ณ	ด	ต	ถ	ท	ธ	น	บ
dt	t	t	t	n	d	dt	t	t	t	n	b
ป	ฝ	ฟ	พ	ฟ	ภ	ม	ย	ร	ฤ	ฌ	ล
bp	p	f	p	f	p	m	y	r	reu	reu	l
ภ	ภา	ว	ศ	ษ	ส	ห	ฬ	อ	ฮ		
leu	leu	w	s	s	s	h	l	not sounded	h		

สระ Vowel

อ	ะ	ั	ำ	า	ำ	ิ	ี
-or	-a	-u	-oo-a	-ah	-um	-i	-ee
เ	เ	ุ	ู	เ	เ	เ	เ
-eu	-eu	-oo	-oo	-ay	-e	-er-ee	-er
เ	เ	เ	เ	เ	เ	เ	แ
-e	-aw	-or	-er	-ee-a	-ee-a	-eu-a	-air
แ	แ	โ	โ	ใ	ใ		
-air	-air	-oh	-o	-ai	-ai		

Thailand Public Holidays 2025



JANUARY

WED
1

New Year's Day

FEBRUARY

WED
12

Makha Bucha Day

APRIL

SUN
6

Chakri Memorial Day

MON
7

Substitution of Chakri Memorial Day

SUN
13

Songkran Festival

MON
14

TUE
15

WED
16

Substitution of Songkran Festival

MAY

THU
1

Labour Day

SUN
4

Coronation Day

MON
5

Substitution of Coronation Day

FRI
9

Royal Ploughing Ceremony

SUN
11

Visakha Bucha Day

MON
12

Substitution of Visakha Bucha Day

JUNE

MON
2

Special holiday

TUE
3

H.M. Queen Suthida's Birthday

JULY

THU
10

Asalha Bucha Day

FRI
11

Buddhist Lent day

MON
28

H.M. King Maha Vajiralongkorn's Birthday

AUGUST

MON
11

Special holiday

TUE
12

Mother's Day

OCTOBER

MON
13

Navamindra Maharaj Day

THU
23

King Chulalongkorn Day

DECEMBER

FRI
5

Father's Day

WED
10

Constitution Day

WED
31

New Year's Eve



The Flavour of 4 Regions of Thailand

All regions of Thailand have their own taste and style of cooking. Why don't you energise your taste buds with the authentic taste of the local?

Northern Region

- Kaeng Hung Lay : Tendered pork stew with garlic and ginger fragrance.
- Sai Oua : Grilled spicy pork sausage with herbs.
- Khao Soi : Noodle with coconut curry and fresh vegetables.

Northeastern Region (I-San)

- Som Tum : Shredded papaya salad with dry shrimps, and other ingredients.
- Laab Moo : Spicy pork salad made from minced pork and herbs.
- Kaeng Khai Mod Dang : Spicy soup with Red Ant's eggs, fermented fish, and vegetables.



Central Region

- Tom Yum Koong : Spicy and aromatic soup with shrimps and lots of herbs
- Kaeng Keaw Wan (Green Curry) : Mild taste coconut curry with egg plant and meat
- Khao Chae : Rice in jasmine scented water eat with choices of side dish

Southern Region

- Kaeng Luang : Yellow sour curry with fish and pickled or fresh bamboo shoot
- Pla Kra Bok Tod Khamin : Crisp fried Kra Bok fish with turmeric and garlic
- Khao Yum : Rice and vegetable salad with "Nam Budu" sweet dressing.

(Do & Don't)

When sharing dining table with Thais.
Critical Do's and Definitely Don'ts

Do's



Do let the host or the senior of the group does the ordering; it's tradition.



Do expect a wide variety of dishes and flavors; part of the trick to ordering Thai food is to get a balance of sweet, sour, salty and spicy.



Do wait for the host to invite you to dig in.



Do use serving spoon to scoop food from sharing plate, only small portions of each dish so there's enough to go around.



Do finish everything on your plate; it lets the host know you enjoyed the meal.



Do take your time to eat the food and enjoy conversation with others; it's the sense of community.

Don'ts



Don't order one dish that you intend to eat by yourself. Thai meals are always shared.



Don't wait for all of the food to come out before you eat it, Thai meals are leisurely affairs and the food just keeps on coming.



Don't pass the food to your friend over other people's head. It's very rude.



Don't store food and keep it all on your own plate, leaving none for anyone else.



Don't eat rice and noodles in the same bite, as they should be eaten separately.

amazing
THAILAND
Always Amazes You

Business Hours

GOVERNMENT OFFICES AND TOURIST ATTRACTIONS

Government offices and most tourist attractions open every Monday – Friday at 08.30 a.m. – 04.30 p.m. They typically close at 12pm for an hour re-opening at 1pm. However, in metropolis like Bangkok, Pattaya, Chiang Mai and Phuket, opening hours of most tourist attractions is a bit longer.

Private COMPANIES

Opening hours of private companies are different. Most of the companies open at 08.30 a.m. – 05.30 p.m. Some open every Monday – Friday, but some also open on Saturdays.

BANK

Every bank open every Monday – Friday from 08.30 a.m. – 03.30 p.m. except some branches especially those in the department stores open daily from 10.30 a.m. – 07.30 p.m.

MUSEUMS AND ART GALLERIES

Museums and art galleries open daily from 09.00 a.m. – 04.00 p.m. and are closed every Monday. Some are closed once a week or every public Holiday.

DEPARTMENT STORES

Most stores open around 10 a.m., with some in more local areas opening at 9 a.m. Once open, they stay open all day, until at least 8 p.m. or even later. Shopping malls typically open between 10-10:30 a.m. and close between 9-10 p.m. and they are open seven days a week. Even on public holidays, all large stores and every shopping mall are open. Supermarkets are open by 9 a.m.-9:30 a.m. and close between 9-10 p.m., although there are several that are open 24 hours a day, seven days a week.

Pubs and bars

Pubs and bars open at night from 08.00 p.m. – 01.00 a.m. but some bars are also restaurants so they may open from 10.00 a.m. – 02.00 a.m.

RESTAURANTS

Opening hours of restaurants are varied depending on their menus. Some open at 06.00 a.m. until the evening, some restaurants like those in china town open from 05.00 p.m. – 01.00 a.m., or some open 24 hours.

SKYTRAIN (BTS) AND SUBWAY (MRT)

Skytrain (BTS) and subway (MRT) open daily from 06.00 a.m. – 12.00 a.m. and may extend the operating hours on the important days or events such as during the New Year's Day.

Law and Order

- The minimum age to enter a pub/bar or purchase alcohol is 18 years old. Always carry your ID with you or you may be refused entry.
- 18 years old considered an adult, no exception as children law.
- In Thailand you cannot drive if you drink alcohol. It is illegal. There are checkpoints along the road at night to randomly check the alcohol of the driver. You must not drive if you have more than 50 milligrams of alcohol per 100 millilitres of blood
- There are tourist policies in the big city to help foreigners.

Health and Safety

Everyone can easily access public health centers which are local in every sub-district. There are 250,000 Health volunteers in every community which represent public health centers in Thailand and support communities' health. Thailand health system ranked 5th in 2021 of Global Health Security Index.

Vaccine need before go to Thailand are

- Fully course of Covis-19 vaccine (Must)
- Hepatitis A (recommend)
- Hepatitis B (recommend)
- Japanese Encephalitis (recommend for those who stay in Japan more than a month)
- Malaria (recommend)
- Typhoid (recommend)

You are recommend to have travel and health insurance to take care your hospital expense

Safety Precautions

- Sunburn - Thailand located in a tropical area with high UV rays. Bring your sunscreen at least SPF 30
- Mosquitoes - Mostly come out for food in the evening 17:00 - 20:00. Recommend to bring insects repellent and use before peak time.
- Other insects/Bug - Can be in the rural area such as scorpion, wasp, bee, etc Recommend to bring insects repellent
- Heat and cold - In the shopping center and office building Thailand using air-conditioning everywhere. Be ready for temperature immediately change from outdoor to indoor temperature (daytime 27-40 degree and night time 20-25 degrees) like in Europe outdoor is cold and indoor is warm as in the opposite way in Thailand
- Driving a motorcycle in Thailand-not recommended as Thai traffic is sometimes by personal intention, there are motorcycle accidents every minute around Thailand.
- Car driving - Thailand is the left traffic road, if you are familiar with it and have an international driving license, you could drive the car in Thailand by renting.

Lifestyle

As a tropical country, people prefer to stay indoors during daytime , especially in the afternoon. And going out in the evening. Evering in Thailand is 17:00 - 20:00 as the sunset almost the same time everyday at about 18:00 and sunrise almost the same time everyday at 06:00 not changing in any seasons.

Values and Attitudes

- Buddhism is very influential in Thai culture. Thai society is family culture and hierarchical society.
- Heads are sacred and feet are lowly. So do not point anything by feet or cross things. No touching anyone heads except kids
- Gender equality is not much talked about in Thai society, as women are the respected gender. Man and woman have different responsibilities in thailand. They believe that women are the mother gender to be loved and respected. Anything that is marvelous and respectful always named "Mae" means "Mother". For example Mae Nam is River, Mae Thoranee is Mother Earth, etc.

Quality of Life

Rural and city areas in Thailand are quite different. There is a social gap in Thailand in terms of infrastructure, education opportunity, health care,etc. The city area has more quality than in the rural area.

Government

After 1932, Thailand has had 20 constitutions and charters. All constitutions state that the politics is conducted within the framework of a constitutional monarchy.

Government is separated into three branches:

- The legislative branch: the National Assembly is composed of the Senate, the 250-member fully appointed upper house, and House of Representatives, the elected 500-member lower house. The current constitution gives senators power to elect prime ministers along with the representatives until 2022. Its most recent election is the 2019 general election. The coalition led by Palang Pracharath Party currently holds the majority.
- The executive branch consisting of the Prime Minister of Thailand who was elected by the National Assembly and other cabinet members of up to 35 people. The cabinet was appointed by the king on the advice of the prime minister. The prime minister is the head of government.
- The judiciary is supposed to be independent of the executive and the legislative branches, although judicial rulings are suspected of being based on political considerations rather than on existing law.

Administrative divisions

Thailand is a unitary state; the administrative services of the executive branch are divided into three levels by National Government Organisation Act, BE 2534 (1991): central, provincial and local. Thailand is composed of 76 provinces which are first-level administrative divisions. There are also two specially governed districts: the capital Bangkok and Pattaya. Bangkok is at provincial level and thus often counted as a province. Each province is divided into districts and the districts are further divided into sub-districts. The name of each province's capital city is the same as that of the province. All provincial governors and district chiefs, which are administrators of provinces and districts respectively, are appointed by the central government.





สมาคมจิตอาสา

Volunteer Spirit Association

THAILAND

About



VSA Thailand is an Informal Education Organization / Non-Profit Organization (NPO) / Non-Government Organization (NGO) / Peace organization collaborating international voluntary projects for people of all ages, cultures, religious and economic backgrounds.

VSA is IVS representative in Thailand as the bridge to bring people from various cultures or believing to learn cultural diversity, make understanding by supporting activities of local communities around the world. Imagine, the small group of people with different characters gathering in local communities around the world and supporting local activities with villagers. This's the image of idea "Think Global Act Local"

Learning and understanding in cultural diversity bring the Companion. Reducing Conflict. Individual Capacity Building and Developing Community Potential.

Mission

Co-ordinates international voluntary projects for people of all ages, cultures, religious and economic backgrounds.

Vision

International Voluntary Service. Gateway to Global Citizen. an organization where you can share friendships and dreams with people around the world.



Structure

Executive Committes

Operation Team

Administrative

International Networking

Domestic Metworking

Members

International Partners

Workcamp Leader

Host Families

Local Partners

Host Families

Education



Culture Art 

Agriculture Peace 

Environment 

Capacity Building 



Who is Who

